

ERC1 Rabbit Polyclonal Antibody



CAB9509

Product Information

Size:

20uL, 50uL, 100uL, 200uL

Observed MW:

130 120kDa

Calculated MW:

81kDa/108kDa/113kDa/124kDa/128kDa

Applications:

WB

Reactivity:

Human, Mouse, Rat

Protein Background

The protein encoded by this gene is a member of a family of RIM-binding proteins. RIMs are active zone proteins that regulate neurotransmitter release. This gene has been found fused to the receptor-type tyrosine kinase gene RET by gene rearrangement due to the translocation t(10;12)(q11;p13) in thyroid papillary carcinoma. Alternative splicing results in multiple transcript variants.

Immunogen information

Gene ID:

23085

Uniprot

Q8IUD2

Synonyms:

ERC1; Cast2; ELKS; ERC-1; RAB6IP2

Antibody Information

Recommended dilutions:

WB 1:500 - 1:2000

Source:

Rabbit

Isotype:

IgG

Purification:

Affinity purification

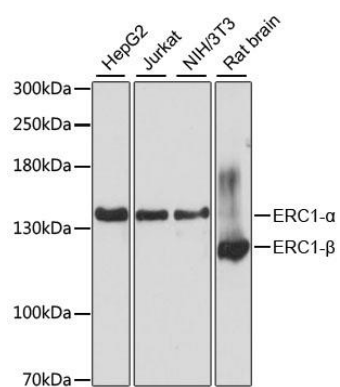
Immunogen:

Recombinant fusion protein containing a sequence corresponding to amino acids 700-850 of human ERC1 (NP_829884.1).

Storage:

Store at -20°C. Avoid freeze / thaw cycles. Buffer: PBS with 0.02% sodium azide, 50% glycerol, pH7.3.

Product Images



Western blot analysis of extracts of various cell lines, using ERC1 antibody (CAB9509) at 1:3000 dilution. Secondary antibody: HRP Goat Anti-Rabbit IgG (H+L) (CABS014) at 1:10000 dilution. Lysates/proteins: 25ug per lane. Blocking buffer: 3% nonfat dry milk in TBST. Detection: ECL Basic Kit (CABM00020). Exposure time: 15s.