

WSTF Rabbit Monoclonal Antibody



CAB9519

Product Information

Size:

20uL, 50uL, 100uL, 200uL

Observed MW:

185KDa

Calculated MW:

185kDa

Applications:

WB

Reactivity:

Human, Mouse, Rat

Protein Background

This gene encodes a member of the bromodomain protein family. The bromodomain is a structural motif characteristic of proteins involved in chromatin-dependent regulation of transcription. This gene is deleted in Williams-Beuren syndrome, a developmental disorder caused by deletion of multiple genes at 7q11.23. [provided by RefSeq, Jul 2008]

Immunogen information

Gene ID:

9031

Uniprot

Q9UIG0

Synonyms:

WBSCR10; WBSCR9; WSTF

Antibody Information

Recommended dilutions:

WB 1:500 - 1:2000

Source:

Rabbit

Isotype:

IgG

Purification:

Affinity purification

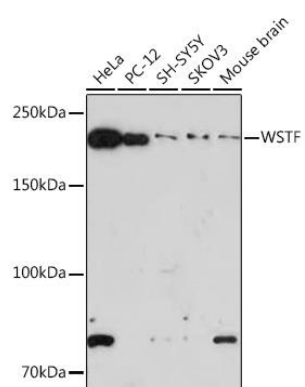
Immunogen:

A synthesized peptide derived from human WSTF

Storage:

Store at -20°C. Avoid freeze / thaw cycles. Buffer: PBS with 0.02% sodium azide, 0.05% BSA, 50% glycerol, pH7.3.

Product Images



Western blot - WSTF Rabbit mAb (CAB9519)