

Lin28B Rabbit Monoclonal Antibody



CAB9524

Product Information

Size:

20uL, 50uL, 100uL, 200uL

Observed MW:

21kDa/32kDa

Calculated MW:

32kDa

Applications:

WB IHC

Reactivity:

Human

Protein Background

The protein encoded by this gene belongs to the lin-28 family, which is characterized by the presence of a cold-shock domain and a pair of CCHC zinc finger domains. This gene is highly expressed in testis, fetal liver, placenta, and in primary human tumors and cancer cell lines. It is negatively regulated by microRNAs that target sites in the 3' UTR, and overexpression of this gene in primary tumors is linked to the repression of let-7 family of microRNAs and derepression of let-7 targets, which facilitates cellular transformation. [provided by RefSeq, Jun 2012]

Immunogen information

Gene ID:

389421

Uniprot

Q6ZN17

Synonyms:

CSDD2

Antibody Information

Recommended dilutions:

WB 1:500 - 1:2000 IHC 1:50
- 1:200

Source:

Rabbit

Isotype:

IgG

Purification:

Affinity purification

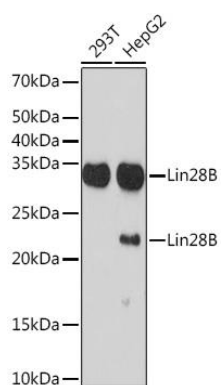
Immunogen:

A synthesized peptide derived from human Lin28B

Storage:

Store at -20°C. Avoid freeze / thaw cycles. Buffer: PBS with 0.02% sodium azide, 0.05% BSA, 50% glycerol, pH7.3.

Product Images



Western blot - Lin28B Rabbit mAb (CAB9524)