

SARDH Rabbit Polyclonal Antibody



CAB9541

Product Information

Size:

20uL, 50uL, 100uL, 200uL

Observed MW:

101kDa

Calculated MW:

82kDa/101kDa

Applications:

WB IF

Reactivity:

Mouse, Rat

Protein Background

This gene encodes an enzyme localized to the mitochondrial matrix which catalyzes the oxidative demethylation of sarcosine. This enzyme is distinct from another mitochondrial matrix enzyme, dimethylglycine dehydrogenase, which catalyzes a reaction resulting in the formation of sarcosine. Mutations in this gene are associated with sarcosinemia. Alternatively spliced transcript variants have been described.

Immunogen information

Gene ID:

1757

Uniprot

Q9UL12

Synonyms:

SARDH; BPR-2; DMGDHL1; SAR; SARD; SDH

Antibody Information

Recommended dilutions:

WB 1:500 - 1:2000 IF 1:50 - 1:100

Source:

Rabbit

Isotype:

IgG

Purification:

Affinity purification

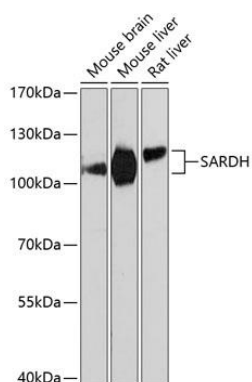
Immunogen:

Recombinant fusion protein containing a sequence corresponding to amino acids 300-560 of human SARDH (NP_009032.2).

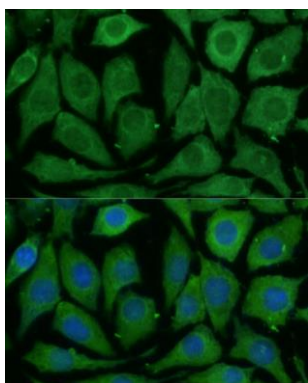
Storage:

Store at -20°C. Avoid freeze / thaw cycles. Buffer: PBS with 0.02% sodium azide, 50% glycerol, pH7.3.

Product Images



Western blot analysis of extracts of various cell lines, using SARDH Antibody (CAB9541) at 1:3000 dilution. Secondary antibody: HRP Goat Anti-Rabbit IgG (H+L) (CABS014) at 1:10000 dilution. Lysates/proteins: 25ug per lane. Blocking buffer: 3% nonfat dry milk in TBST. Detection: ECL Basic Kit (CABM00020). Exposure time: 90s.



Immunofluorescence analysis of L929 cells using SARDH Polyclonal Antibody (CAB9541) at dilution of 1:100 (40x lens). Blue: DAPI for nuclear staining.