

PHLPP1 Rabbit Polyclonal Antibody



CAB9542

Product Information

Size:

20uL, 50uL, 100uL, 200uL

Observed MW:

185kDa

Calculated MW:

133kDa/184kDa

Applications:

WB IHC IF

Reactivity:

Human, Mouse, Rat

Protein Background

This gene encodes a member of the serine/threonine phosphatase family. The encoded protein promotes apoptosis by dephosphorylating and inactivating the serine/threonine kinase Akt, and functions as a tumor suppressor in multiple types of cancer. Increased expression of this gene may also play a role in obesity and type 2 diabetes by interfering with Akt-mediated insulin signaling.

Immunogen information

Gene ID:

23239

Uniprot

O60346

Synonyms:

PHLPP1; PHLPP; PLEKHE1; PPM3A; SCOP

Antibody Information

Recommended dilutions:

WB 1:500 - 1:2000 IHC 1:50
- 1:200 IF 1:50 - 1:200

Source:

Rabbit

Isotype:

IgG

Purification:

Affinity purification

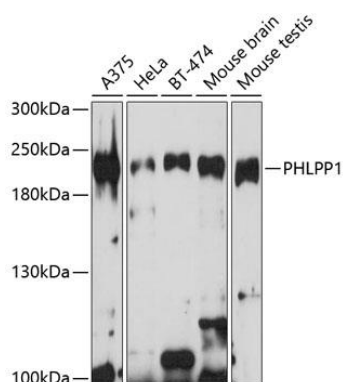
Immunogen:

Recombinant fusion protein containing a sequence corresponding to amino acids 1508-1717 of human PHLPP1 (NP_919431.2).

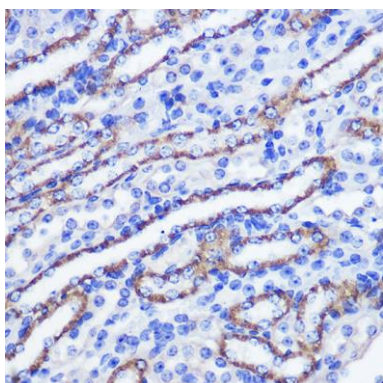
Storage:

Store at -20°C. Avoid freeze / thaw cycles. Buffer: PBS with 0.02% sodium azide, 50% glycerol, pH7.3.

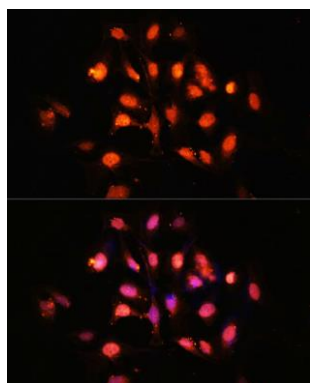
Product Images



Western blot analysis of extracts of various cell lines, using PHLPP1 antibody (CAB9542) at 1:1000 dilution. Secondary antibody: HRP Goat Anti-Rabbit IgG (H+L) (CABS014) at 1:10000 dilution. Lysates/proteins: 25ug per lane. Blocking buffer: 3% nonfat dry milk in TBST. Detection: ECL Basic Kit (CABM00020). Exposure time: 10s.



Immunohistochemistry of paraffin-embedded mouse kidney using PHLPP1 Rabbit pAb (CAB9542) at dilution of 1:100 (40x lens).



Immunofluorescence analysis of U-2 OS cells using PHLPP1 Polyclonal Antibody (CAB9542) at dilution of 1:100 (40x lens). Blue: DAPI for nuclear staining.