

# SYCP3 Rabbit Polyclonal Antibody



CAB9548

---

## Product Information

**Size:**

100uL, 200uL

**Observed MW:**

28kDa

**Calculated MW:**

27kDa

**Applications:**

WB

**Reactivity:**

Mouse, Rat

## Protein Background

This gene encodes an essential structural component of the synaptonemal complex. This complex is involved in synapsis, recombination and segregation of meiotic chromosomes. Mutations in this gene are associated with azoospermia in males and susceptibility to pregnancy loss in females. Alternate splicing results in multiple transcript variants that encode the same protein.

## Immunogen information

**Gene ID:**

50511

**Uniprot**

Q8IZU3

**Synonyms:**

SYCP3; COR1; RPRGL4; SCP3; SPGF4

## Antibody Information

**Recommended dilutions:**

WB 1:500 - 1:1000

**Source:**

Rabbit

**Isotype:**

IgG

**Purification:**

Affinity purification

**Immunogen:**

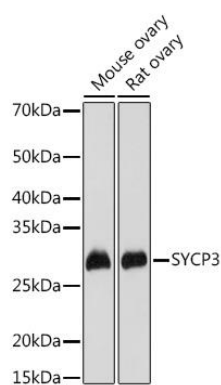
A synthetic Peptide of human SYCP3

**Storage:**

Store at -20°C. Avoid freeze / thaw cycles. Buffer: PBS with 0.02% sodium azide, 50% glycerol, pH7.3.

## Product Images

---



Western blot analysis of extracts of various cell lines, using SYCP3 antibody (CAB9548) at 1:1000 dilution. Secondary antibody: HRP Goat Anti-Rabbit IgG (H+L) (CABS014) at 1:10000 dilution. Lysates/proteins: 25ug per lane. Blocking buffer: 3% nonfat dry milk in TBST. Detection: ECL Basic Kit (CABM00020). Exposure time: 30s.