

HIPK2 Rabbit Monoclonal Antibody



CAB9552

Product Information

Size:

20uL, 50uL, 100uL, 200uL

Observed MW:

105KDa/131KDa

Calculated MW:

130/100kDa

Applications:

WB IF

Reactivity:

Human

Protein Background

This gene encodes a conserved serine/threonine kinase that is a member of the homeodomain-interacting protein kinase family. The encoded protein interacts with homeodomain transcription factors and many other transcription factors such as p53, and can function as both a corepressor and a coactivator depending on the transcription factor and its subcellular localization. Multiple transcript variants encoding different isoforms have been found for this gene. [provided by RefSeq, Nov 2011]

Immunogen information

Gene ID:

28996

Uniprot

Q9H2X6

Synonyms:

PRO0593

Antibody Information

Recommended dilutions:

WB 1:500 - 1:2000 IF 1:50 - 1:200

Source:

Rabbit

Isotype:

IgG

Purification:

Affinity purification

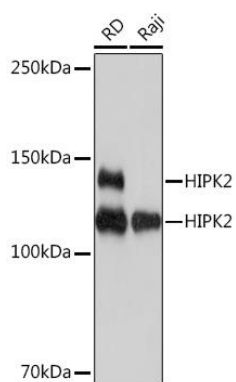
Immunogen:

A synthesized peptide derived from human HIPK2

Storage:

Store at -20°C. Avoid freeze / thaw cycles. Buffer: PBS with 0.02% sodium azide, 0.05% BSA, 50% glycerol, pH7.3.

Product Images



Western blot - HIPK2 Rabbit mAb (CAB9552)