

CD7 Rabbit Monoclonal Antibody



CAB9560

Product Information

Size:

20uL, 50uL, 100uL, 200uL

Observed MW:

37KDa

Calculated MW:

37kDa

Applications:

WB IHC

Reactivity:

Human

Protein Background

This gene encodes a transmembrane protein which is a member of the immunoglobulin superfamily. This protein is found on thymocytes and mature T cells. It plays an essential role in T-cell interactions and also in T-cell/B-cell interaction during early lymphoid development. [provided by RefSeq, Jul 2008]

Immunogen information

Gene ID:

924

Uniprot

P09564

Synonyms:

GP40; LEU-9; TP41; Tp40

Antibody Information

Recommended dilutions:

WB 1:500 - 1:2000 IHC 1:50
- 1:200

Source:

Rabbit

Isotype:

IgG

Purification:

Affinity purification

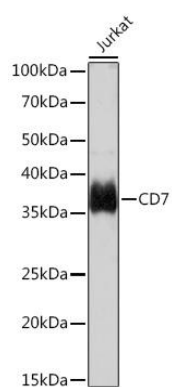
Immunogen:

A synthesized peptide derived from human CD7

Storage:

Store at -20°C. Avoid freeze / thaw cycles. Buffer: PBS with 0.02% sodium azide, 0.05% BSA, 50% glycerol, pH7.3.

Product Images



Western blot - CD7 Rabbit mAb (CAB9560)