

ZCCHC8 Rabbit Polyclonal Antibody



CAB9563

Product Information

Size:

20uL, 50uL, 100uL, 200uL

Observed MW:

78kDa

Calculated MW:

51kDa/78kDa

Applications:

WB

Reactivity:

Human, Mouse

Antibody Information

Recommended dilutions:

WB 1:500 - 1:2000

Source:

Rabbit

Isotype:

IgG

Purification:

Affinity purification

Protein Background

This gene encodes a scaffold protein which serves as an accessory factor to the nuclear RNA exosome complex. The encoded protein forms a trimeric human nuclear exosome targeting (NEXT) complex, together with hMTR4 and the RNA-binding factor RBM7 which promotes the exosomal degradation of non-coding promoter-upstream transcripts, enhancer RNAs and 3'-extended products of histone- and small nuclear RNA transcription. This complex is also thought to recruit the exosome to degrade intronic RNAs via its interaction with both the exosome and the spliceosome. It contains both an N-terminal zinc-knuckle domain and a C-terminal proline-rich domain.

Immunogen information

Gene ID:

55596

Uniprot

Q6NZY4

Synonyms:

ZCCHC8

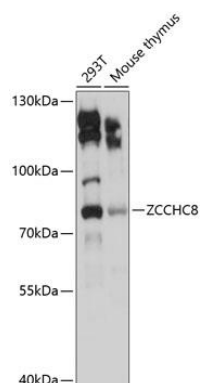
Immunogen:

Recombinant fusion protein containing a sequence corresponding to amino acids 1-240 of human ZCCHC8 (NP_060082.2).

Storage:

Store at -20°C. Avoid freeze / thaw cycles. Buffer: PBS with 0.02% sodium azide, 50% glycerol, pH7.3.

Product Images



Western blot analysis of extracts of various cell lines, using ZCCHC8 antibody (CAB9563) at 1:3000 dilution. Secondary antibody: HRP Goat Anti-Rabbit IgG (H+L) (CABS014) at 1:10000 dilution. Lysates/proteins: 25ug per lane. Blocking buffer: 3% nonfat dry milk in TBST. Detection: ECL Basic Kit (CABM00020). Exposure time: 15s.