

# MAPRE3 Rabbit Polyclonal Antibody



CAB9591

## Product Information

### Size:

20uL, 50uL, 100uL, 200uL

### Observed MW:

35kDa

### Calculated MW:

30kDa/31kDa

### Applications:

WB IHC

### Reactivity:

Mouse

## Protein Background

The protein encoded by this gene is a member of the RP/EB family of genes. The protein localizes to the cytoplasmic microtubule network and binds APCL, a homolog of the adenomatous polyposis coli tumor suppressor gene.

## Immunogen information

### Gene ID:

22924

### Uniprot

Q9UPY8

### Synonyms:

MAPRE3; EB3; EBF3; EBF3-S; RP3

## Antibody Information

### Recommended dilutions:

WB 1:1000 - 1:3000 IHC

1:50 - 1:200

### Source:

Rabbit

### Isotype:

IgG

### Purification:

Affinity purification

### Immunogen:

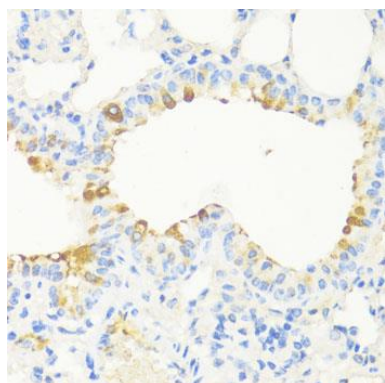
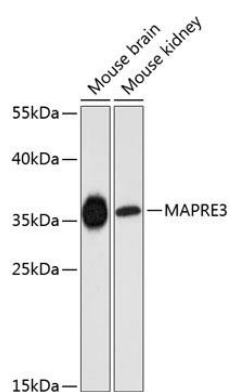
Recombinant fusion protein containing a sequence corresponding to amino acids 1-281 of human MAPRE3 (NP\_036458.2).

### Storage:

Store at -20°C. Avoid freeze / thaw cycles. Buffer: PBS with 0.02% sodium azide, 50% glycerol, pH7.3.

## Product Images

---



Western blot analysis of extracts of various cell lines, using MAPRE3 antibody (CAB9591) at 1:3000 dilution. Secondary antibody: HRP Goat Anti-Rabbit IgG (H+L) (CABS014) at 1:10000 dilution. Lysates/proteins: 25ug per lane. Blocking buffer: 3% nonfat dry milk in TBST. Detection: ECL Enhanced Kit (CABM00021). Exposure time: 90s.

Immunohistochemistry of paraffin-embedded mouse bronchus using MAPRE3 antibody (CAB9591) at dilution of 1:100 (40x lens).