

WIPI1 Rabbit Monoclonal Antibody



CAB9600

Product Information

Size:

20uL, 50uL, 100uL, 200uL

Observed MW:

49KDa

Calculated MW:

48kDa

Applications:

WB

Reactivity:

Human, Mouse, Rat

Protein Background

This gene encodes a WD40 repeat protein. Members of the WD40 repeat family are key components of many essential biologic functions. They regulate the assembly of multiprotein complexes by presenting a beta-propeller platform for simultaneous and reversible protein-protein interactions. Members of the WIPI subfamily of WD40 repeat proteins have a 7-bladed propeller structure and contain a conserved motif for interaction with phospholipids. Alternative splicing results in multiple transcript variants. [provided by RefSeq, Mar 2016]

Immunogen information

Gene ID:

55062

Uniprot

Q5MNZ9

Synonyms:

ATG18; ATG18A; WIPI49

Antibody Information

Recommended dilutions:

WB 1:500 - 1:2000

Source:

Rabbit

Isotype:

IgG

Purification:

Affinity purification

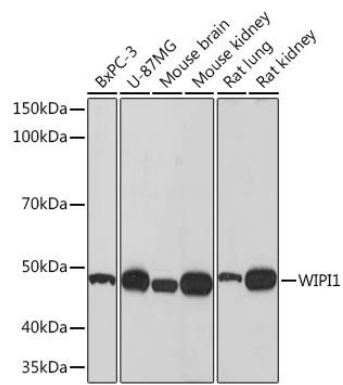
Immunogen:

A synthesized peptide derived from human WIPI1

Storage:

Store at -20°C. Avoid freeze / thaw cycles. Buffer: PBS with 0.02% sodium azide, 0.05% BSA, 50% glycerol, pH7.3.

Product Images



Western blot - WIP1 Rabbit mAb (CAB9600)