

# KRT12 Rabbit Polyclonal Antibody



CAB9642

---

## Product Information

### Size:

20uL, 50uL, 100uL, 200uL

### Observed MW:

53kDa

### Calculated MW:

53kDa

### Applications:

WB

### Reactivity:

Human, Mouse, Rat

## Antibody Information

### Recommended dilutions:

WB 1:500 - 1:1000 IHC 1:20  
- 1:50 FC 1:20 - 1:50

### Source:

Rabbit

### Isotype:

IgG

### Purification:

Affinity purification

## Protein Background

KRT12 encodes the type I intermediate filament chain keratin 12, expressed in corneal epithelia. Mutations in this gene lead to Meesmann corneal dystrophy.

## Immunogen information

### Gene ID:

3859

### Uniprot

Q99456

### Synonyms:

KRT12; K12

### Immunogen:

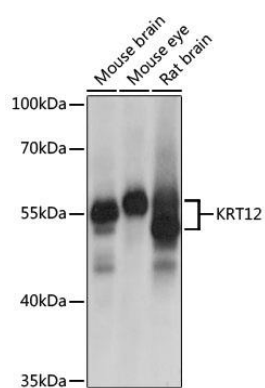
Recombinant fusion protein containing a sequence corresponding to amino acids 295-494 of human KRT12 (NP\_000214.1).

### Storage:

Store at -20°C. Avoid freeze / thaw cycles. Buffer: PBS with 0.02% sodium azide, 50% glycerol, pH7.3.

## Product Images

---



Western blot analysis of extracts of various cell lines, using KRT12 antibody (CAB9642) at 1:1000 dilution. Secondary antibody: HRP Goat Anti-Rabbit IgG (H+L) (CABS014) at 1:10000 dilution. Lysates/proteins: 25ug per lane. Blocking buffer: 3% nonfat dry milk in TBST. Detection: ECL Basic Kit (CABM00020). Exposure time: 1s.