

# GNB2 Rabbit Monoclonal Antibody



CAB9643

## Product Information

### Size:

20uL, 50uL, 100uL, 200uL

### Observed MW:

35KDa

### Calculated MW:

35kDa

### Applications:

WB IHC

### Reactivity:

Human, Mouse, Rat

## Protein Background

Heterotrimeric guanine nucleotide-binding proteins (G proteins), which integrate signals between receptors and effector proteins, are composed of an alpha, a beta, and a gamma subunit. These subunits are encoded by families of related genes. This gene encodes a beta subunit. Beta subunits are important regulators of alpha subunits, as well as of certain signal transduction receptors and effectors. This gene contains a trinucleotide (CCG) repeat length polymorphism in its 5' UTR. [provided by RefSeq, Jul 2008]

## Immunogen information

### Gene ID:

2783

### Uniprot

P62879

### Synonyms:

## Antibody Information

### Recommended dilutions:

WB 1:500 - 1:2000 IHC 1:50 - 1:200

### Source:

Rabbit

### Isotype:

IgG

### Purification:

Affinity purification

### Immunogen:

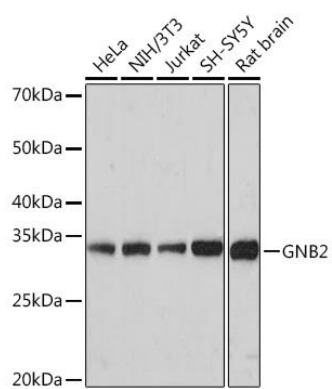
A synthesized peptide derived from human GNB2

### Storage:

Store at -20°C. Avoid freeze / thaw cycles. Buffer: PBS with 0.02% sodium azide, 0.05% BSA, 50% glycerol, pH7.3.

## Product Images

---



Western blot - GNB2 Rabbit mAb (CAB9643)