

ME2 Rabbit Polyclonal Antibody



CAB9650

Product Information

Size:

20uL, 50uL, 100uL, 200uL

Observed MW:

59kDa/65kDa

Calculated MW:

53kDa/65kDa

Applications:

WB IP

Reactivity:

Human, Mouse

Antibody Information

Recommended dilutions:

WB 1:500 - 1:2000 IP 1:50 - 1:200

Source:

Rabbit

Isotype:

IgG

Purification:

Affinity purification

Protein Background

This gene encodes a mitochondrial NAD-dependent malic enzyme, a homotetrameric protein, that catalyzes the oxidative decarboxylation of malate to pyruvate. It had previously been weakly linked to a syndrome known as Friedreich ataxia that has since been shown to be the result of mutation in a completely different gene. Certain single-nucleotide polymorphism haplotypes of this gene have been shown to increase the risk for idiopathic generalized epilepsy. Alternatively spliced transcript variants encoding different isoforms found for this gene.

Immunogen information

Gene ID:

4200

Uniprot

P23368

Synonyms:

ME2; ODS1

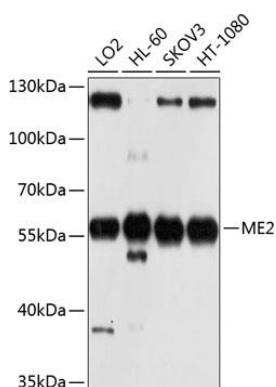
Immunogen:

Recombinant fusion protein containing a sequence corresponding to amino acids 220-479 of human ME2 (NP_001161807.1).

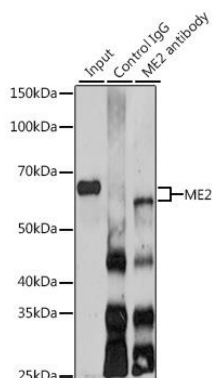
Storage:

Store at -20°C. Avoid freeze / thaw cycles. Buffer: PBS with 0.02% sodium azide, 50% glycerol, pH7.3.

Product Images



Western blot analysis of extracts of various cell lines, using ME2 antibody (CAB9650) at 1:1000 dilution. Secondary antibody: HRP Goat Anti-Rabbit IgG (H+L) (CABS014) at 1:10000 dilution. Lysates/proteins: 25ug per lane. Blocking buffer: 3% nonfat dry milk in TBST. Detection: ECL Basic Kit (CABM00020). Exposure time: 10s.



Immunoprecipitation analysis of 200ug extracts of SKOV3 cells using 3ug ME2 antibody (CAB9650). Western blot was performed from the immunoprecipitate using ME2 antibody (CAB9650) at a dilution of 1:1000.