

# CKAP2 Rabbit Polyclonal Antibody



CAB9706

---

## Product Information

### Size:

20uL, 50uL, 100uL, 200uL

### Observed MW:

77kDa

### Calculated MW:

55kDa/71kDa/76kDa

### Applications:

WB

### Reactivity:

Mouse

## Protein Background

This gene encodes a cytoskeleton-associated protein that stabilizes microtubules and plays a role in the regulation of cell division. The encoded protein is itself regulated through phosphorylation at multiple serine and threonine residues. There is a pseudogene of this gene on chromosome 14. Alternative splicing results in multiple transcript variations.

## Immunogen information

### Gene ID:

26586

### Uniprot

Q8WWK9

### Synonyms:

CKAP2; LB1; TMAP; se20-10

## Antibody Information

### Recommended dilutions:

WB 1:500 - 1:2000

### Source:

Rabbit

### Isotype:

IgG

### Purification:

Affinity purification

### Immunogen:

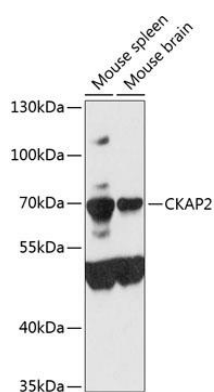
Recombinant fusion protein containing a sequence corresponding to amino acids 335-460 of human CKAP2 (NP\_001273616.1).

### Storage:

Store at -20°C. Avoid freeze / thaw cycles. Buffer: PBS with 0.02% sodium azide, 50% glycerol, pH7.3.

## Product Images

---



Western blot analysis of extracts of various cell lines, using CKAP2 antibody (CAB9706) at 1:3000 dilution. Secondary antibody: HRP Goat Anti-Rabbit IgG (H+L) (CABS014) at 1:10000 dilution. Lysates/proteins: 25ug per lane. Blocking buffer: 3% nonfat dry milk in TBST. Detection: ECL Enhanced Kit (CABM00021). Exposure time: 90s.