

GATAD2B Rabbit Polyclonal Antibody



CAB9716

Product Information

Size:

20uL, 50uL, 100uL, 200uL

Observed MW:

80kDa

Calculated MW:

65kDa

Applications:

WB IHC

Reactivity:

Human, Mouse, Rat

Protein Background

This gene encodes a zinc finger protein transcriptional repressor. The encoded protein is part of the methyl-CpG-binding protein-1 complex, which represses gene expression by deacetylating methylated nucleosomes. Mutations in this gene are linked to intellectual disability and dysmorphic features associated with mental retardation. [provided by RefSeq, Jun 2016]

Immunogen information

Gene ID:

57459

Uniprot

Q8WXI9

Synonyms:

GATAD2B; MRD18; P66beta; p68

Antibody Information

Recommended dilutions:

WB 1:500 - 1:2000 IHC 1:50 - 1:200

Source:

Rabbit

Isotype:

IgG

Purification:

Affinity purification

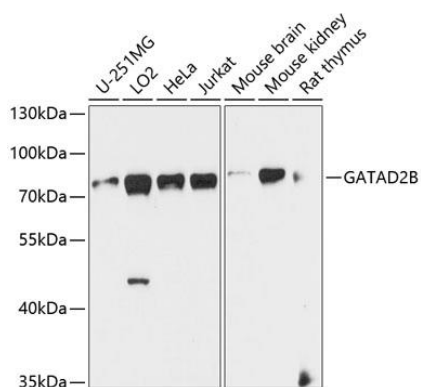
Immunogen:

Recombinant fusion protein containing a sequence corresponding to amino acids 1-120 of human GATAD2B (NP_065750.1).

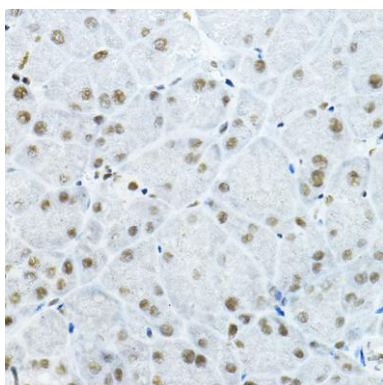
Storage:

Store at -20°C. Avoid freeze / thaw cycles. Buffer: PBS with 0.02% sodium azide, 50% glycerol, pH7.3.

Product Images



Western blot analysis of extracts of various cell lines, using GATAD2B antibody (CAB9716) at 1:1000 dilution. Secondary antibody: HRP Goat Anti-Rabbit IgG (H+L) (CABS014) at 1:10000 dilution. Lysates/proteins: 25ug per lane. Blocking buffer: 3% nonfat dry milk in TBST. Detection: ECL Basic Kit (CABM00020). Exposure time: 60s.



Immunohistochemistry of paraffin-embedded mouse pancreas using GATAD2B Rabbit pAb (CAB9716) at dilution of 1:100 (40x lens).