

# CLEC16A Rabbit Polyclonal Antibody



CAB9753

---

## Product Information

### Size:

20uL, 50uL, 100uL, 200uL

### Observed MW:

118kDa

### Calculated MW:

14kDa/103kDa/117kDa

### Applications:

WB

### Reactivity:

Human

## Protein Background

This gene encodes a member of the C-type lectin domain containing family. Single nucleotide polymorphisms in introns of this gene have been associated with diabetes mellitus, multiple sclerosis and rheumatoid arthritis. Multiple transcript variants encoding different isoforms have been found for this gene.

## Immunogen information

### Gene ID:

23274

### Uniprot

Q2KHT3

### Synonyms:

CLEC16A; Gop-1; KIAA0350

## Antibody Information

### Recommended dilutions:

WB 1:200 - 1:2000

### Source:

Rabbit

### Isotype:

IgG

### Purification:

Affinity purification

### Immunogen:

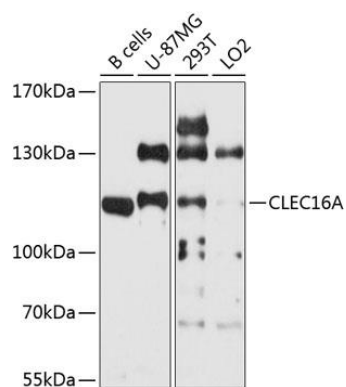
Recombinant fusion protein containing a sequence corresponding to amino acids 330-550 of human CLEC16A (NP\_001230332.1).

### Storage:

Store at -20°C. Avoid freeze / thaw cycles. Buffer: PBS with 0.02% sodium azide, 50% glycerol, pH7.3.

## Product Images

---



Western blot analysis of extracts of various cell lines, using CLEC16A antibody (CAB9753) at 1:1000 dilution. Secondary antibody: HRP Goat Anti-Rabbit IgG (H+L) (CABS014) at 1:10000 dilution. Lysates/proteins: 25ug per lane. Blocking buffer: 3% nonfat dry milk in TBST. Detection: ECL Basic Kit (CABM00020). Exposure time: 90s.