

# ADCY1 Rabbit Polyclonal Antibody



CAB9760

---

## Product Information

### Size:

20uL, 50uL, 100uL, 200uL

### Observed MW:

123kDa

### Calculated MW:

123kDa

### Applications:

WB

### Reactivity:

Human, Mouse

## Protein Background

This gene encodes a member of the of adenylate cyclase gene family that is primarily expressed in the brain. This protein is regulated by calcium/calmodulin concentration and may be involved in brain development. Alternate splicing results in multiple transcript variants.

## Immunogen information

### Gene ID:

107

### Uniprot

Q08828

### Synonyms:

ADCY1; AC1; DFNB44

## Antibody Information

### Recommended dilutions:

WB 1:200 - 1:1000

### Source:

Rabbit

### Isotype:

IgG

### Purification:

Affinity purification

### Immunogen:

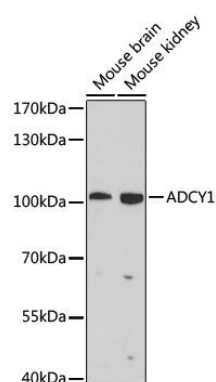
Recombinant fusion protein containing a sequence corresponding to amino acids 470-610 of human ADCY1 (NP\_066939.1).

### Storage:

Store at -20°C. Avoid freeze / thaw cycles. Buffer: PBS with 0.02% sodium azide, 50% glycerol, pH7.3.

## Product Images

---



Western blot analysis of extracts of various cell lines, using ADCY1 antibody (CAB9760) at 1:1000 dilution. Secondary antibody: HRP Goat Anti-Rabbit IgG (H+L) (CABS014) at 1:10000 dilution. Lysates/proteins: 25ug per lane. Blocking buffer: 3% nonfat dry milk in TBST. Detection: ECL Enhanced Kit (CABM00021). Exposure time: 90s.