

CALB2 Rabbit Polyclonal Antibody



CAB9807

Product Information

Size:

20uL, 50uL, 100uL, 200uL

Observed MW:

29kDa

Calculated MW:

31kDa

Applications:

WB IHC IF

Reactivity:

Human, Mouse, Rat

Protein Background

This gene encodes an intracellular calcium-binding protein belonging to the troponin C superfamily. Members of this protein family have six EF-hand domains which bind calcium. This protein plays a role in diverse cellular functions, including message targeting and intracellular calcium buffering. It also functions as a modulator of neuronal excitability, and is a diagnostic marker for some human diseases, including Hirschsprung disease and some cancers. Alternative splicing results in multiple transcript variants.

Immunogen information

Gene ID:

794

Uniprot

P22676

Synonyms:

CALB2; CAB29; CAL2; CR

Antibody Information

Recommended dilutions:

WB 1:1000 - 1:4000 IHC
1:50 - 1:100 IF 1:50 - 1:200

Source:

Rabbit

Isotype:

IgG

Purification:

Affinity purification

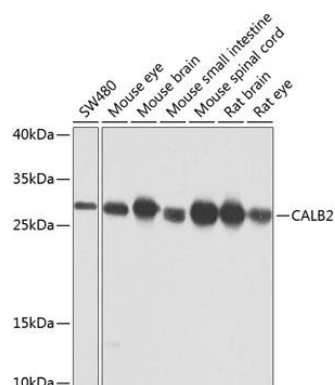
Immunogen:

Recombinant fusion protein containing a sequence corresponding to amino acids 1-271 of human CALB2 (NP_001731.2).

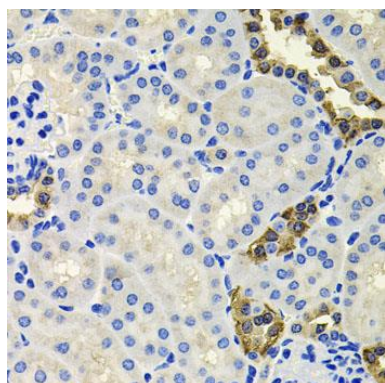
Storage:

Store at -20°C. Avoid freeze / thaw cycles. Buffer: PBS with 0.02% sodium azide, 50% glycerol, pH7.3.

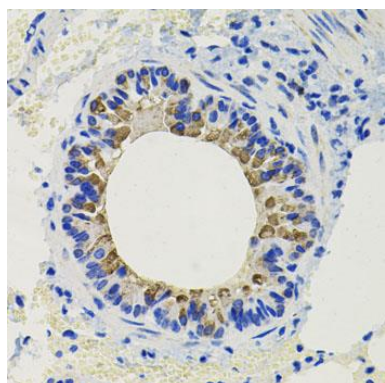
Product Images



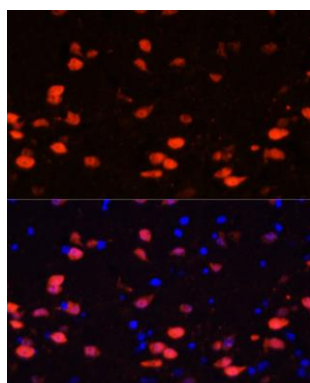
Western blot analysis of extracts of various cell lines, using CALB2 antibody (CAB9807) at 1:1000 dilution. Secondary antibody: HRP Goat Anti-Rabbit IgG (H+L) (CABS014) at 1:10000 dilution. Lysates/proteins: 25ug per lane. Blocking buffer: 3% nonfat dry milk in TBST. Detection: ECL Basic Kit (CABM00020). Exposure time: 1s.



Immunohistochemistry of paraffin-embedded mouse kidney using CALB2 antibody (CAB9807) at dilution of 1:100 (40x lens).



Immunohistochemistry of paraffin-embedded mouse lung using CALB2 antibody (CAB9807) at dilution of 1:100 (40x lens).



Immunofluorescence analysis of rat brain using CALB2 antibody (CAB9807) at dilution of 1:100. Blue: DAPI for nuclear staining.