

CTAG1B Rabbit Polyclonal Antibody



CAB9810

Product Information

Size:

20uL, 50uL, 100uL, 200uL

Observed MW:

18kDa

Calculated MW:

16kDa/17kDa

Applications:

WB IHC

Reactivity:

Human, Rat

Protein Background

The protein encoded by this gene is an antigen that is overexpressed in many cancers but that is also expressed in normal testis. This gene is found in a duplicated region of the X-chromosome and therefore has a neighboring gene of identical sequence.

Immunogen information

Gene ID:

1485

Uniprot

P78358

Synonyms:

CTAG1B; CT6.1; CTAG; CTAG1; ESO1; LAGE-2; LAGE2B; NY-ESO-1

Antibody Information

Recommended dilutions:

WB 1:500 - 1:2000 IHC 1:50
- 1:200

Source:

Rabbit

Isotype:

IgG

Purification:

Affinity purification

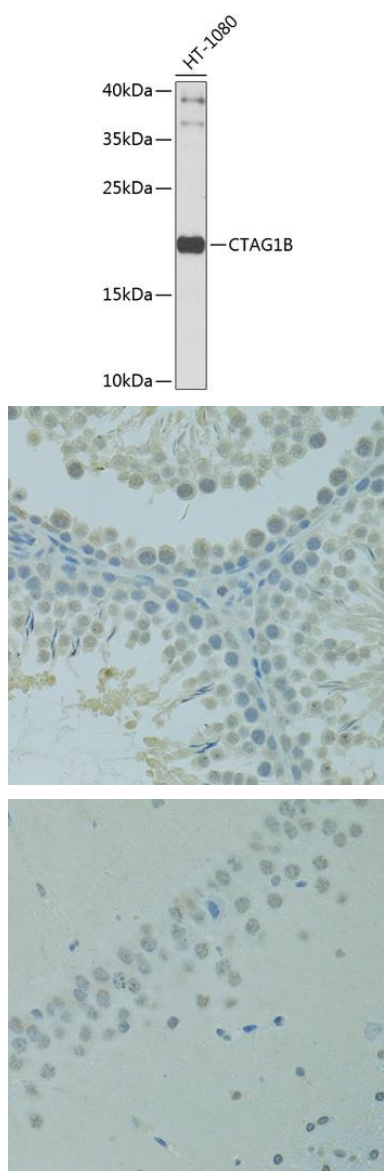
Immunogen:

Recombinant fusion protein containing a sequence corresponding to amino acids 1-180 of human CTAG1B (NP_001318.1).

Storage:

Store at -20°C. Avoid freeze / thaw cycles. Buffer: PBS with 0.02% sodium azide, 50% glycerol, pH7.3.

Product Images



Western blot analysis of extracts of HT-1080 cells, using CTAG1B antibody (CAB9810) at 1:1000 dilution. Secondary antibody: HRP Goat Anti-Rabbit IgG (H+L) (CABS014) at 1:10000 dilution. Lysates/proteins: 25ug per lane. Blocking buffer: 3% nonfat dry milk in TBST. Detection: ECL Basic Kit (CABM00020). Exposure time: 15s.

Immunohistochemistry of paraffin-embedded rat testis using CTAG1B antibody (CAB9810) at dilution of 1:100 (40x lens).

Immunohistochemistry of paraffin-embedded rat brain using CTAG1B antibody (CAB9810) at dilution of 1:100 (40x lens).