

OPA1 Rabbit Polyclonal Antibody



CAB9833

Product Information

Size:

20uL, 50uL, 100uL, 200uL

Observed MW:

80-100KDa

Calculated MW:

111kDa/115kDa

Applications:

WB IF

Reactivity:

Human, Mouse, Rat

Protein Background

This gene product is a nuclear-encoded mitochondrial protein with similarity to dynamin-related GTPases. It is a component of the mitochondrial network. Mutations in this gene have been associated with optic atrophy type 1, which is a dominantly inherited optic neuropathy resulting in progressive loss of visual acuity, leading in many cases to legal blindness. Multiple transcript variants encoding different isoforms have been found for this gene.

Immunogen information

Gene ID:

4976

Uniprot

O60313

Synonyms:

OPA1; BERHS; MGM1; MTDPS14; NPG; NTG; largeG

Antibody Information

Recommended dilutions:

WB 1:500 - 1:2000 IF 1:50 - 1:200

Source:

Rabbit

Isotype:

IgG

Purification:

Affinity purification

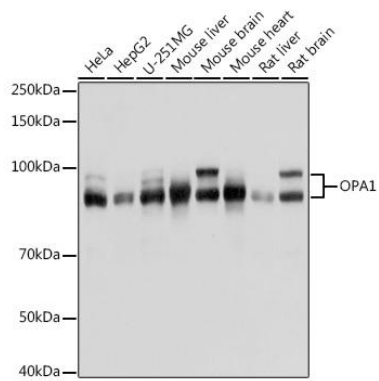
Immunogen:

Recombinant fusion protein containing a sequence corresponding to amino acids 661-960 of human OPA1 (NP_056375.2).

Storage:

Store at -20°C. Avoid freeze / thaw cycles. Buffer: PBS with 0.02% sodium azide, 50% glycerol, pH7.3.

Product Images



Western blot analysis of extracts of various cell lines, using OPA1 Rabbit pAb (CAB9833) at 1:1000 dilution. Secondary antibody: HRP Goat Anti-Rabbit IgG (H+L) (CABS014) at 1:10000 dilution. Lysates/proteins: 25ug per lane. Blocking buffer: 3% nonfat dry milk in TBST. Detection: ECL Basic Kit (CABM00020). Exposure time: 3s.