

OTC Rabbit Polyclonal Antibody



CAB9834

Product Information

Size:

20uL, 50uL, 100uL, 200uL

Observed MW:

38kDa

Calculated MW:

39kDa

Applications:

WB IHC

Reactivity:

Human, Mouse, Rat

Protein Background

This nuclear gene encodes a mitochondrial matrix enzyme. Missense, nonsense, and frameshift mutations in this enzyme lead to ornithine transcarbamylase deficiency, which causes hyperammonemia. Since the gene for this enzyme maps close to that for Duchenne muscular dystrophy, it may play a role in that disease also.

Immunogen information

Gene ID:

5009

Uniprot

P00480

Synonyms:

OTC; OCTD

Antibody Information

Recommended dilutions:

WB 1:1000 - 1:4000 IHC

1:50 - 1:100

Source:

Rabbit

Isotype:

IgG

Purification:

Affinity purification

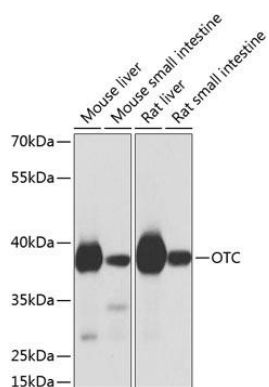
Immunogen:

Recombinant fusion protein containing a sequence corresponding to amino acids 215-354 of human OTC (NP_000522.3).

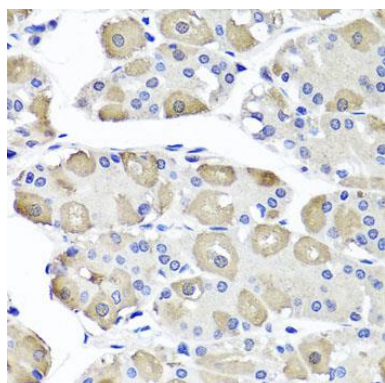
Storage:

Store at -20°C. Avoid freeze / thaw cycles. Buffer: PBS with 0.02% sodium azide, 50% glycerol, pH7.3.

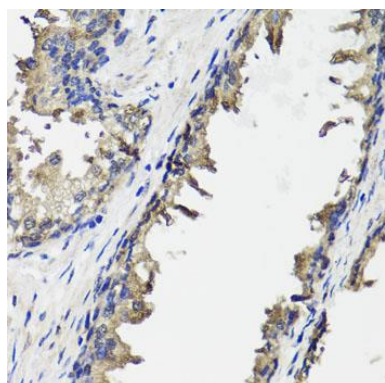
Product Images



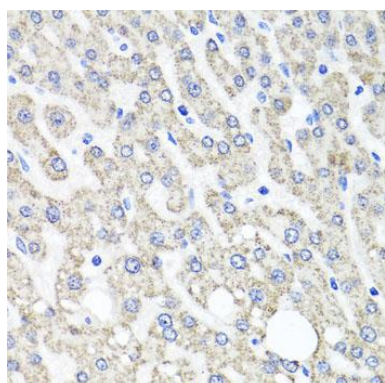
Western blot analysis of extracts of various cell lines, using OTC antibody (CAB9834) at 1:1000 dilution. Secondary antibody: HRP Goat Anti-Rabbit IgG (H+L) (CABS014) at 1:10000 dilution. Lysates/proteins: 25ug per lane. Blocking buffer: 3% nonfat dry milk in TBST. Detection: ECL Basic Kit (CABM00020). Exposure time: 1s.



Immunohistochemistry of paraffin-embedded human stomach using OTC antibody (CAB9834) at dilution of 1:100 (40x lens).



Immunohistochemistry of paraffin-embedded human prostate using OTC antibody (CAB9834) at dilution of 1:100 (40x lens).



Immunohistochemistry of paraffin-embedded human liver damage using OTC antibody (CAB9834) at dilution of 1:100 (40x lens).