

# RNASEL Rabbit Polyclonal Antibody



CAB9840

---

## Product Information

### Size:

20uL, 50uL, 100uL, 200uL

### Observed MW:

84kDa

### Calculated MW:

73kDa/83kDa

### Applications:

WB IHC

### Reactivity:

Human, Mouse, Rat

## Protein Background

This gene encodes a component of the interferon-regulated 2-5A system that functions in the antiviral and antiproliferative roles of interferons. Mutations in this gene have been associated with predisposition to prostate cancer and this gene is a candidate for the hereditary prostate cancer 1 (HPC1) allele.

## Immunogen information

### Gene ID:

6041

### Uniprot

Q05823

### Synonyms:

RNASEL; PRCA1; RNS4

## Antibody Information

### Recommended dilutions:

WB 1:500 - 1:2000 IHC 1:50  
- 1:200

### Source:

Rabbit

### Isotype:

IgG

### Purification:

Affinity purification

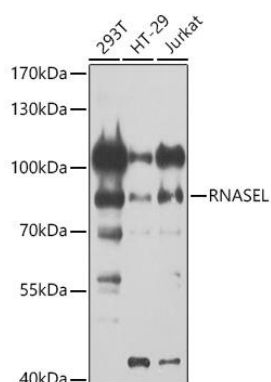
### Immunogen:

Recombinant fusion protein containing a sequence corresponding to amino acids 472-741 of human RNASEL (NP\_066956.1).

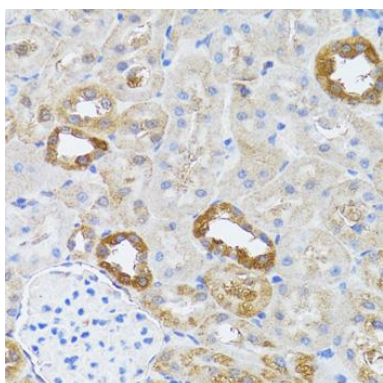
### Storage:

Store at -20°C. Avoid freeze / thaw cycles. Buffer: PBS with 0.02% sodium azide, 50% glycerol, pH7.3.

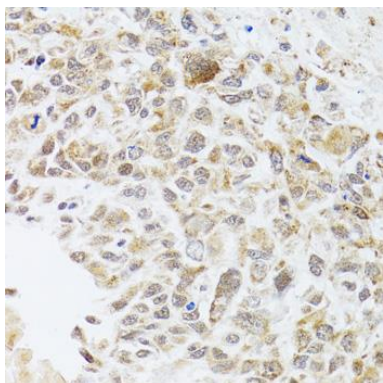
## Product Images



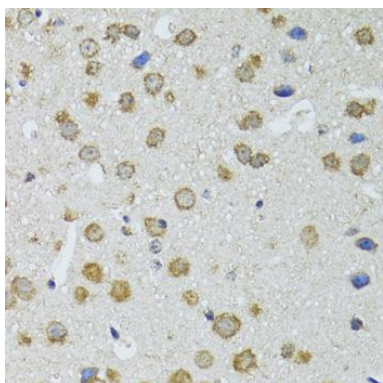
Western blot analysis of extracts of various cell lines, using RNASEL antibody (CAB9840) at 1:1000 dilution. Secondary antibody: HRP Goat Anti-Rabbit IgG (H+L) (CABS014) at 1:10000 dilution. Lysates/proteins: 25ug per lane. Blocking buffer: 3% nonfat dry milk in TBST. Detection: ECL Basic Kit (CABM00020). Exposure time: 30s.



Immunohistochemistry of paraffin-embedded rat kidney using RNASEL antibody (CAB9840) at dilution of 1:100 (40x lens).



Immunohistochemistry of paraffin-embedded human lung cancer using RNASEL antibody (CAB9840) at dilution of 1:100 (40x lens).



Immunohistochemistry of paraffin-embedded mouse brain using RNASEL antibody (CAB9840) at dilution of 1:100 (40x lens).