

RPE65 Rabbit Polyclonal Antibody



CAB9841

Product Information

Size:

20uL, 50uL, 100uL, 200uL

Observed MW:

61kDa

Calculated MW:

60kDa

Applications:

WB IF

Reactivity:

Human, Mouse, Rat

Antibody Information

Recommended dilutions:

WB 1:500 - 1:2000 IF 1:50 - 1:200

Source:

Rabbit

Isotype:

IgG

Purification:

Affinity purification

Protein Background

This gene encodes a protein which is located in the retinal pigment epithelium and is involved in the production of 11-cis retinal and in visual pigment regeneration. There are two forms of this protein, a soluble form called sRPE65, and a palmitoylated, membrane-bound form known as mRPE65. mRPE65 serves as the palmitoyl donor for lecithin retinol acyl transferase (LRAT), the enzyme that catalyzes the vitamin A to all trans retinol step of the chromophore regeneration process. Both mRPE65 and sRPE65 also serve as regulatory proteins, with the ratio and concentrations of these molecules playing a role in the inhibition of 11-cis retinal synthesis. Mutations in this gene have been associated with Leber congenital amaurosis type 2 (LCA2) and retinitis pigmentosa.

Immunogen information

Gene ID:

6121

Uniprot

Q16518

Synonyms:

RPE65; BCO3; LCA2; RP20; mRPE65; rd12; sRPE65

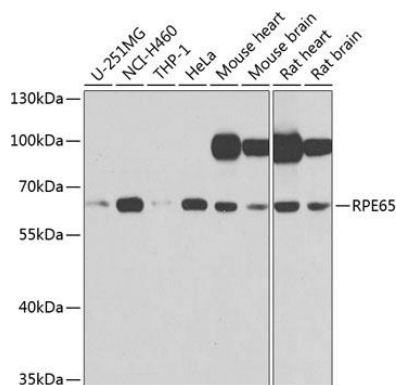
Immunogen:

Recombinant fusion protein containing a sequence corresponding to amino acids 274-533 of human RPE65 (NP_000320.1).

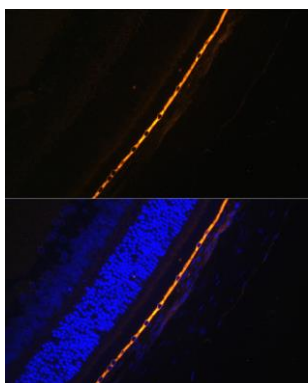
Storage:

Store at -20°C. Avoid freeze / thaw cycles. Buffer: PBS with 0.02% sodium azide, 50% glycerol, pH7.3.

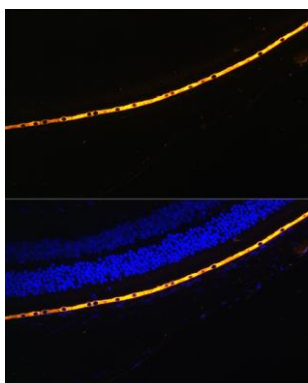
Product Images



Western blot analysis of extracts of various cell lines, using RPE65 antibody (CAB9841) at 1:1000 dilution. Secondary antibody: HRP Goat Anti-Rabbit IgG (H+L) (CABS014) at 1:10000 dilution. Lysates/proteins: 25ug per lane. Blocking buffer: 3% nonfat dry milk in TBST. Detection: ECL Basic Kit (CABM00020). Exposure time: 5s.



Immunofluorescence analysis of Rat eye cells using RPE65 antibody (CAB9841) at dilution of 1:100. Blue: DAPI for nuclear staining.



Immunofluorescence analysis of Mouse eye cells using RPE65 antibody (CAB9841) at dilution of 1:100. Blue: DAPI for nuclear staining.