

ABCC3 Rabbit Polyclonal Antibody



CAB9849

Product Information

Size:

20uL, 50uL, 100uL, 200uL

Observed MW:

169kDa

Calculated MW:

55kDa/64kDa/137kDa/169kDa/174kDa

Applications:

WB IHC

Reactivity:

Human

Protein Background

The protein encoded by this gene is a member of the superfamily of ATP-binding cassette (ABC) transporters. ABC proteins transport various molecules across extra- and intra-cellular membranes. ABC genes are divided into seven distinct subfamilies (ABC1, MDR/TAP, MRP, ALD, OABP, GCN20, White). This protein is a member of the MRP subfamily which is involved in multi-drug resistance. The specific function of this protein has not yet been determined; however, this protein may play a role in the transport of biliary and intestinal excretion of organic anions. Alternatively spliced variants which encode different protein isoforms have been described; however, not all variants have been fully characterized.

Immunogen information

Gene ID:

8714

Uniprot

O15438

Synonyms:

ABCC3; ABC31; EST90757; MLP2; MOAT-D; MRP3; cMOAT2

Antibody Information

Recommended dilutions:

WB 1:500 - 1:2000 IHC 1:50 - 1:200

Source:

Rabbit

Isotype:

IgG

Purification:

Affinity purification

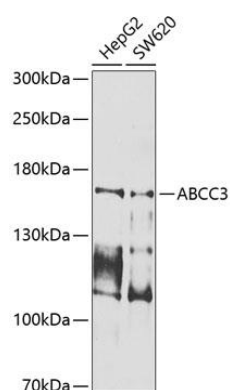
Immunogen:

Recombinant fusion protein containing a sequence corresponding to amino acids 830-950 of human ABCC3 (NP_003777.2).

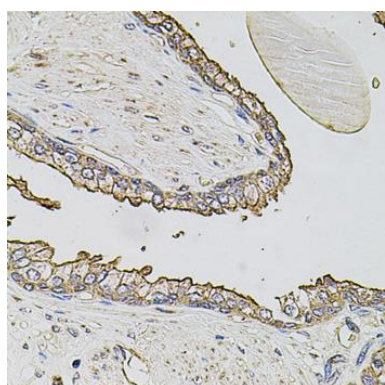
Storage:

Store at -20°C. Avoid freeze / thaw cycles. Buffer: PBS with 0.02% sodium azide, 50% glycerol, pH7.3.

Product Images



Western blot analysis of extracts of various cell lines, using ABCC3 antibody (CAB9849) at 1:1000 dilution. Secondary antibody: HRP Goat Anti-Rabbit IgG (H+L) (CABS014) at 1:10000 dilution. Lysates/proteins: 25ug per lane. Blocking buffer: 3% nonfat dry milk in TBST. Detection: ECL Basic Kit (CABM00020). Exposure time: 1s.



Immunohistochemistry of paraffin-embedded human prostate using ABCC3 antibody (CAB9849) at dilution of 1:100 (40x lens).