

FBP2 Rabbit Polyclonal Antibody



CAB9850

Product Information

Size:

20uL, 50uL, 100uL, 200uL

Observed MW:

36kDa

Calculated MW:

36kDa

Applications:

WB

Reactivity:

Mouse, Rat

Antibody Information

Recommended dilutions:

WB 1:500 - 1:2000

Source:

Rabbit

Isotype:

IgG

Purification:

Affinity purification

Protein Background

This gene encodes a gluconeogenesis regulatory enzyme which catalyzes the hydrolysis of fructose 1, 6-bisphosphate to fructose 6-phosphate and inorganic phosphate.

Immunogen information

Gene ID:

8789

Uniprot

O00757

Synonyms:

FBP2

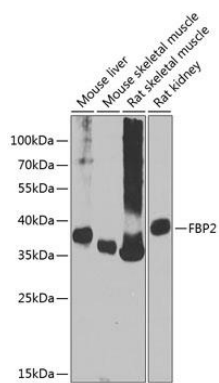
Immunogen:

Recombinant fusion protein containing a sequence corresponding to amino acids 1-339 of human FBP2 (NP_003828.2).

Storage:

Store at -20°C. Avoid freeze / thaw cycles. Buffer: PBS with 0.02% sodium azide, 50% glycerol, pH7.3.

Product Images



Western blot analysis of extracts of various cell lines, using FBP2 antibody (CAB9850) at 1:1000 dilution. Secondary antibody: HRP Goat Anti-Rabbit IgG (H+L) (CABS014) at 1:10000 dilution. Lysates/proteins: 25ug per lane. Blocking buffer: 3% nonfat dry milk in TBST. Detection: ECL Basic Kit (CABM00020). Exposure time: 90s.