

# CLDN10 Rabbit Polyclonal Antibody



CAB9853

## Product Information

### Size:

20uL, 50uL, 100uL, 200uL

### Observed MW:

26kDa

### Calculated MW:

22kDa/24kDa

### Applications:

WB

### Reactivity:

Rat

## Antibody Information

### Recommended dilutions:

WB 1:500 - 1:2000

### Source:

Rabbit

### Isotype:

IgG

### Purification:

Affinity purification

## Protein Background

This gene encodes a member of the claudin family. Claudins are integral membrane proteins and components of tight junction strands. Tight junction strands serve as a physical barrier to prevent solutes and water from passing freely through the paracellular space between epithelial or endothelial cell sheets, and also play critical roles in maintaining cell polarity and signal transductions. The expression level of this gene is associated with recurrence of primary hepatocellular carcinoma. Six alternatively spliced transcript variants encoding different isoforms have been reported, but the transcript sequences of some variants are not determined.

## Immunogen information

### Gene ID:

9071

### Uniprot

P78369

### Synonyms:

CLDN10; CPETRL3; OSP-L

### Immunogen:

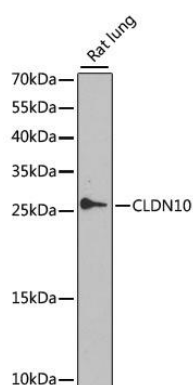
A synthetic peptide corresponding to a sequence within amino acids 1-100 of human CLDN10 (NP\_008915.1).

### Storage:

Store at -20°C. Avoid freeze / thaw cycles. Buffer: PBS with 0.02% sodium azide, 50% glycerol, pH7.3.

## Product Images

---



Western blot analysis of extracts of rat lung, using CLDN10 antibody (CAB9853) at 1:1000 dilution. Secondary antibody: HRP Goat Anti-Rabbit IgG (H+L) (CABS014) at 1:10000 dilution. Lysates/proteins: 25ug per lane. Blocking buffer: 3% nonfat dry milk in TBST. Detection: ECL Enhanced Kit (CABM00021). Exposure time: 60s.