

MRC2 Rabbit Polyclonal Antibody



CAB9858

Product Information

Size:

20uL, 50uL, 100uL, 200uL

Observed MW:

190kDa

Calculated MW:

166kDa

Applications:

WB

Reactivity:

Human, Mouse

Protein Background

This gene encodes a member of the mannose receptor family of proteins that contain a fibronectin type II domain and multiple C-type lectin-like domains. The encoded protein plays a role in extracellular matrix remodeling by mediating the internalization and lysosomal degradation of collagen ligands. Expression of this gene may play a role in the tumorigenesis and metastasis of several malignancies including breast cancer, gliomas and metastatic bone disease.

Immunogen information

Gene ID:

9902

Uniprot

Q9UBG0

Synonyms:

MRC2; CD280; CLEC13E; ENDO180; UPARAP

Antibody Information

Recommended dilutions:

WB 1:500 - 1:2000

Source:

Rabbit

Isotype:

IgG

Purification:

Affinity purification

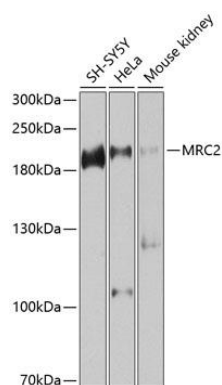
Immunogen:

Recombinant fusion protein containing a sequence corresponding to amino acids 120-300 of human MRC2 (NP_006030.2).

Storage:

Store at -20°C. Avoid freeze / thaw cycles. Buffer: PBS with 0.02% sodium azide, 50% glycerol, pH7.3.

Product Images



Western blot analysis of extracts of various cell lines, using MRC2 antibody (CAB9858) at 1:1000 dilution. Secondary antibody: HRP Goat Anti-Rabbit IgG (H+L) (CABS014) at 1:10000 dilution. Lysates/proteins: 25ug per lane. Blocking buffer: 3% nonfat dry milk in TBST. Detection: ECL Enhanced Kit (CABM00021). Exposure time: 10s.