

RBM15B Rabbit Polyclonal Antibody



CAB9873

Product Information

Size:

20uL, 50uL, 100uL, 200uL

Observed MW:

97kDa/107kDa

Calculated MW:

63kDa/97kDa

Applications:

WB

Reactivity:

Human, Mouse

Antibody Information

Recommended dilutions:

WB 1:500 - 1:2000

Source:

Rabbit

Isotype:

IgG

Purification:

Affinity purification

Protein Background

Immunogen information

Gene ID:

29890

Uniprot

Q8NDT2

Synonyms:

RBM15B; HUMAGCGB; OTT3

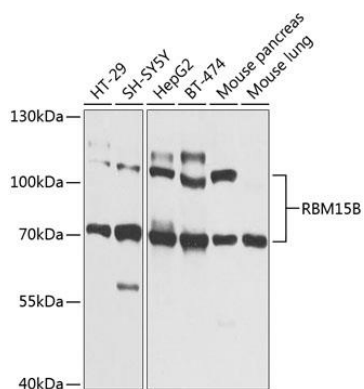
Immunogen:

Recombinant fusion protein containing a sequence corresponding to amino acids 540-720 of human RBM15B (NP_037418.3).

Storage:

Store at -20°C. Avoid freeze / thaw cycles. Buffer: PBS with 0.02% sodium azide, 50% glycerol, pH7.3.

Product Images



Western blot analysis of extracts of various cell lines, using RBM15B Antibody (CAB9873) at 1:1000 dilution. Secondary antibody: HRP Goat Anti-Rabbit IgG (H+L) (CABS014) at 1:10000 dilution. Lysates/proteins: 25ug per lane. Blocking buffer: 3% nonfat dry milk in TBST. Detection: ECL Basic Kit (CABM00020). Exposure time: 1s.