

MRPS16 Rabbit Polyclonal Antibody



CAB9874

Product Information

Size:

20uL, 50uL, 100uL, 200uL

Observed MW:

15kDa

Calculated MW:

13kDa/15kDa

Applications:

WB IF

Reactivity:

Human, Mouse, Rat

Antibody Information

Recommended dilutions:

WB 1:500 - 1:2000 IF 1:50 - 1:200

Source:

Rabbit

Isotype:

IgG

Purification:

Affinity purification

Protein Background

Mammalian mitochondrial ribosomal proteins are encoded by nuclear genes and help in protein synthesis within the mitochondrion. Mitochondrial ribosomes (mitoribosomes) consist of a small 28S subunit and a large 39S subunit. They have an estimated 75% protein to rRNA composition compared to prokaryotic ribosomes, where this ratio is reversed. Another difference between mammalian mitoribosomes and prokaryotic ribosomes is that the latter contain a 5S rRNA. Among different species, the proteins comprising the mitoribosome differ greatly in sequence, and sometimes in biochemical properties, which prevents easy recognition by sequence homology. This gene encodes a 28S subunit protein that belongs to the ribosomal protein S16P family. The encoded protein is one of the most highly conserved ribosomal proteins between mammalian and yeast mitochondria. Three pseudogenes (located at 8q21.3, 20q13.32, 22q12-q13.1) for this gene have been described.

Immunogen information

Gene ID:

51021

Uniprot

Q9Y3D3

Synonyms:

MRPS16; CGI-132; COXPD2; MRP-S16; RPMS16

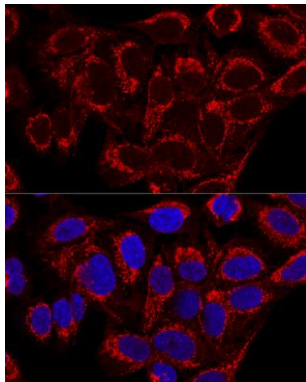
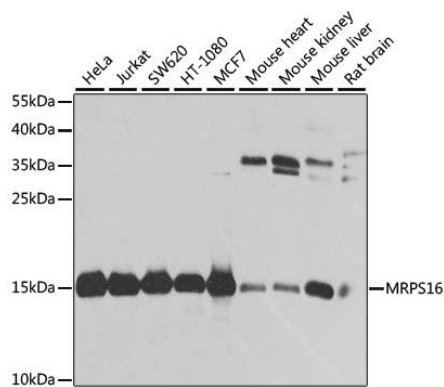
Immunogen:

Recombinant fusion protein containing a sequence corresponding to amino acids 1-137 of human MRPS16 (NP_057149.1).

Storage:

Store at -20°C. Avoid freeze / thaw cycles. Buffer: PBS with 0.02% sodium azide, 50% glycerol, pH7.3.

Product Images



Western blot analysis of extracts of various cell lines, using MRPS16 antibody (CAB9874) at 1:1000 dilution. Secondary antibody: HRP Goat Anti-Rabbit IgG (H+L) (CABS014) at 1:10000 dilution. Lysates/proteins: 25ug per lane. Blocking buffer: 3% nonfat dry milk in TBST. Detection: ECL Basic Kit (CABM00020). Exposure time: 10s.

Confocal immunofluorescence analysis of U2OS cells using MRPS16 Polyclonal Antibody (CAB9874) at dilution of 1:100. Blue: DAPI for nuclear staining.