

PBRM1 Rabbit Polyclonal Antibody



CAB9878

Product Information

Size:

20uL, 50uL, 100uL, 200uL

Observed MW:

230kDa

Calculated MW:

99kDa/181-192kDa

Applications:

WB

Reactivity:

Human, Mouse, Rat

Protein Background

This locus encodes a subunit of ATP-dependent chromatin-remodeling complexes. The encoded protein has been identified as an integral component of complexes necessary for ligand-dependent transcriptional activation by nuclear hormone receptors. Mutations at this locus have been associated with primary clear cell renal cell carcinoma.

Immunogen information

Gene ID:

55193

Uniprot

Q86U86

Synonyms:

PBRM1; BAF180; PB1

Antibody Information

Recommended dilutions:

WB 1:500 - 1:2000

Source:

Rabbit

Isotype:

IgG

Purification:

Affinity purification

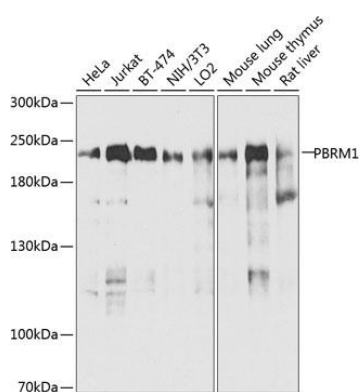
Immunogen:

Recombinant fusion protein containing a sequence corresponding to amino acids 1-230 of human PBRM1 (NP_060783.3).

Storage:

Store at -20°C. Avoid freeze / thaw cycles. Buffer: PBS with 0.02% sodium azide, 50% glycerol, pH7.3.

Product Images



Western blot analysis of extracts of various cell lines, using PBRM1 antibody (CAB9878) at 1:1000 dilution. Secondary antibody: HRP Goat Anti-Rabbit IgG (H+L) (CABS014) at 1:10000 dilution. Lysates/proteins: 25ug per lane. Blocking buffer: 3% nonfat dry milk in TBST. Detection: ECL Enhanced Kit (CABM00021). Exposure time: 30s.