

# CLEC7A Rabbit Polyclonal Antibody



CAB9883

## Product Information

### Size:

20uL, 50uL, 100uL, 200uL

### Observed MW:

31kDa

### Calculated MW:

5kDa/8kDa/13-27kDa

### Applications:

WB

### Reactivity:

Human, Mouse, Rat

## Antibody Information

### Recommended dilutions:

WB 1:500 - 1:2000

### Source:

Rabbit

### Isotype:

IgG

### Purification:

Affinity purification

## Protein Background

This gene encodes a member of the C-type lectin/C-type lectin-like domain (CTL/CTLD) superfamily. The encoded glycoprotein is a small type II membrane receptor with an extracellular C-type lectin-like domain fold and a cytoplasmic domain with an immunoreceptor tyrosine-based activation motif. It functions as a pattern-recognition receptor that recognizes a variety of beta-1, 3-linked and beta-1, 6-linked glucans from fungi and plants, and in this way plays a role in innate immune response. Alternate transcriptional splice variants, encoding different isoforms, have been characterized. This gene is closely linked to other CTL/CTLD superfamily members on chromosome 12p13 in the natural killer gene complex region.

## Immunogen information

### Gene ID:

64581

### Uniprot

Q9BXN2

### Synonyms:

CLEC7A; BGR; CANDF4; CD369; CLECSF12; DECTIN1; SCARE2

### Immunogen:

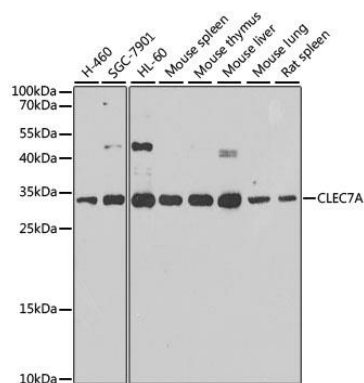
A synthetic peptide corresponding to a sequence within amino acids 100 to the C-terminus of human CLEC7A (NP\_922938.1).

### Storage:

Store at -20°C. Avoid freeze / thaw cycles. Buffer: PBS with 0.02% sodium azide, 50% glycerol, pH7.3.

## Product Images

---



Western blot analysis of extracts of various cell lines, using CLEC7A antibody (CAB9883) at 1:1000 dilution. Secondary antibody: HRP Goat Anti-Rabbit IgG (H+L) (CABS014) at 1:10000 dilution. Lysates/proteins: 25ug per lane. Blocking buffer: 3% nonfat dry milk in TBST. Detection: ECL Basic Kit (CABM00020). Exposure time: 10s.