

NODAL Rabbit Polyclonal Antibody



CAB9902

Product Information

Size:

20uL, 50uL, 100uL, 200uL

Observed MW:

44kDa

Calculated MW:

39kDa

Applications:

WB

Reactivity:

Human, Rat

Antibody Information

Recommended dilutions:

WB 1:500 - 1:2000

Source:

Rabbit

Isotype:

IgG

Purification:

Affinity purification

Protein Background

This gene encodes a secreted ligand of the TGF-beta (transforming growth factor-beta) superfamily of proteins. Ligands of this family bind various TGF-beta receptors leading to recruitment and activation of SMAD family transcription factors that regulate gene expression. The encoded preproprotein is proteolytically processed to generate the mature protein, which regulates early embryonic development. This protein is required for maintenance of human embryonic stem cell pluripotency and may play a role in human placental development. Mutations in this gene are associated with heterotaxy, a condition characterized by random orientation of visceral organs with respect to the left-right axis.

Immunogen information

Gene ID:

4838

Uniprot

Q96S42

Synonyms:

NODAL; HTX5

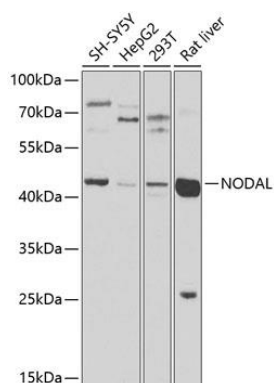
Immunogen:

Recombinant fusion protein containing a sequence corresponding to amino acids 198-347 of human NODAL (NP_060525.3).

Storage:

Store at -20°C. Avoid freeze / thaw cycles. Buffer: PBS with 0.02% sodium azide, 50% glycerol, pH7.3.

Product Images



Western blot analysis of extracts of various cell lines, using NODAL antibody (CAB9902) at 1:1000 dilution. Secondary antibody: HRP Goat Anti-Rabbit IgG (H+L) (CABS014) at 1:10000 dilution. Lysates/proteins: 25ug per lane. Blocking buffer: 3% nonfat dry milk in TBST. Detection: ECL Basic Kit (CABM00020). Exposure time: 30s.