

AMT Rabbit Polyclonal Antibody



CAB9926

Product Information

Size:

20uL, 50uL, 100uL, 200uL

Observed MW:

44kDa

Calculated MW:

37kDa/39kDa/41kDa/43kDa

Applications:

WB IHC IF

Reactivity:

Human, Mouse, Rat

Protein Background

This gene encodes one of four critical components of the glycine cleavage system. Mutations in this gene have been associated with glycine encephalopathy. Multiple transcript variants encoding different isoforms have been found for this gene.

Immunogen information

Gene ID:

275

Uniprot

P48728

Synonyms:

AMT; GCE; GCST; GCVT; NKH

Antibody Information

Recommended dilutions:

WB 1:500 - 1:2000 IHC 1:50
- 1:200 IF 1:50 - 1:200

Source:

Rabbit

Isotype:

IgG

Purification:

Affinity purification

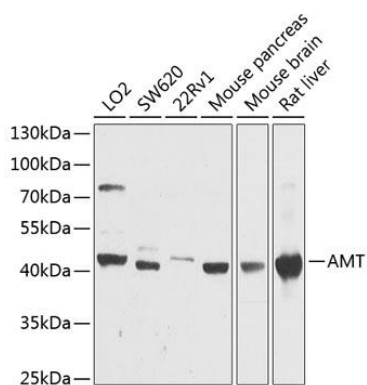
Immunogen:

Recombinant fusion protein containing a sequence corresponding to amino acids 107-386 of human AMT (NP_001158184.1).

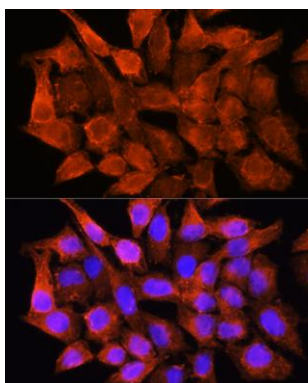
Storage:

Store at -20°C. Avoid freeze / thaw cycles. Buffer: PBS with 0.02% sodium azide, 50% glycerol, pH7.3.

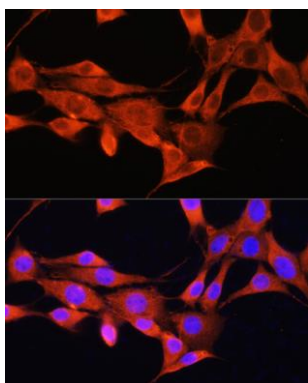
Product Images



Western blot analysis of extracts of various cell lines, using AMT antibody (CAB9926) at 1:1000 dilution. Secondary antibody: HRP Goat Anti-Rabbit IgG (H+L) (CABS014) at 1:10000 dilution. Lysates/proteins: 25ug per lane. Blocking buffer: 3% nonfat dry milk in TBST. Detection: ECL Basic Kit (CABM00020). Exposure time: 90s.



Immunofluorescence analysis of HeLa cells using AMT Rabbit pAb (CAB9926) at dilution of 1:100. Blue: DAPI for nuclear staining.



Immunofluorescence analysis of NIH/3T3 cells using AMT Rabbit pAb (CAB9926) at dilution of 1:100. Blue: DAPI for nuclear staining.