

MAN2B1 Rabbit Polyclonal Antibody



CAB9937

Product Information

Size:

20uL, 50uL, 100uL, 200uL

Observed MW:

170kDa

Calculated MW:

113kDa

Applications:

WB

Reactivity:

Mouse

Protein Background

This gene encodes an enzyme that hydrolyzes terminal, non-reducing alpha-D-mannose residues in alpha-D-mannosides. Its activity is necessary for the catabolism of N-linked carbohydrates released during glycoprotein turnover and it is member of family 38 of glycosyl hydrolases. The full length protein is processed in two steps. First, a 49 aa leader sequence is cleaved off and the remainder of the protein is processed into 3 peptides of 70 kDa, 42 kDa (D) and 13/15 kDa (E). Next, the 70 kDa peptide is further processed into three peptides (A, B and C). The A, B and C peptides are disulfide-linked. Defects in this gene have been associated with lysosomal alpha-mannosidosis. Alternatively spliced transcript variants encoding different isoforms have been found for this gene.

Immunogen information

Gene ID:

4125

Uniprot

O00754

Antibody Information

Recommended dilutions:

WB 1:500 - 1:2000

Source:

Rabbit

Isotype:

IgG

Purification:

Affinity purification

Synonyms:

MAN2B1; LAMAN; MANB

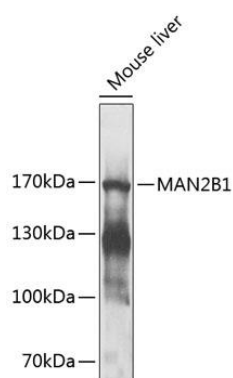
Immunogen:

Recombinant fusion protein containing a sequence corresponding to amino acids 640-850 of human MAN2B1 (NP_000519.2).

Storage:

Store at -20°C. Avoid freeze / thaw cycles. Buffer: PBS with 0.02% sodium azide, 50% glycerol, pH7.3.

Product Images



Western blot analysis of extracts of mouse liver, using MAN2B1 antibody (CAB9937) at 1:1000 dilution. Secondary antibody: HRP Goat Anti-Rabbit IgG (H+L) (CABS014) at 1:10000 dilution. Lysates/proteins: 25ug per lane. Blocking buffer: 3% nonfat dry milk in TBST. Detection: ECL Enhanced Kit (CABM00021). Exposure time: 30s.