

# SERPINB6 Rabbit Polyclonal Antibody



CAB9944

---

## Product Information

**Size:**

20uL, 50uL, 100uL, 200uL

**Observed MW:**

43kDa

**Calculated MW:**

42kDa

**Applications:**

WB

**Reactivity:**

Human, Rat

## Antibody Information

**Recommended dilutions:**

WB 1:500 - 1:2000

**Source:**

Rabbit

**Isotype:**

IgG

**Purification:**

Affinity purification

## Protein Background

The protein encoded by this gene is a member of the serpin (serine proteinase inhibitor) superfamily, and ovalbumin(ov)-serpin subfamily. It was originally discovered as a placental thrombin inhibitor. The mouse homolog was found to be expressed in the hair cells of the inner ear. Mutations in this gene are associated with nonsyndromic progressive hearing loss, suggesting that this serpin plays an important role in the inner ear in the protection against leakage of lysosomal content during stress, and that loss of this protection results in cell death and sensorineural hearing loss. Alternatively spliced transcript variants have been found for this gene.

## Immunogen information

**Gene ID:**

5269

**Uniprot**

P35237

**Synonyms:**

SERPINB6; CAP; DFNB91; MSTP057; PI-6; PI6; PTI; SPI3; serpin B6

**Immunogen:**

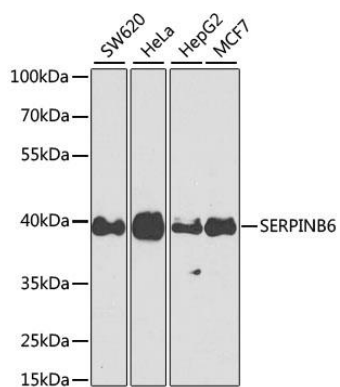
Recombinant fusion protein containing a sequence corresponding to amino acids 180-300 of human SERPINB6 (NP\_004559.4).

**Storage:**

Store at -20°C. Avoid freeze / thaw cycles. Buffer: PBS with 0.02% sodium azide, 50% glycerol, pH7.3.

## Product Images

---



Western blot analysis of extracts of various cell lines, using SERPINB6 antibody (CAB9944) at 1:1000 dilution. Secondary antibody: HRP Goat Anti-Rabbit IgG (H+L) (CABS014) at 1:10000 dilution. Lysates/proteins: 25ug per lane. Blocking buffer: 3% nonfat dry milk in TBST. Detection: ECL Basic Kit (CABM00020). Exposure time: 30s.