

# BAF60a Rabbit Polyclonal Antibody



CAB9950

## Product Information

### Size:

20uL, 50uL, 100uL, 200uL

### Observed MW:

58kDa

### Calculated MW:

58kDa

### Applications:

WB IHC

### Reactivity:

Human, Mouse, Rat

## Antibody Information

### Recommended dilutions:

WB 1:500 - 1:2000 IHC 1:50  
- 1:200

### Source:

Rabbit

### Isotype:

IgG

### Purification:

Affinity purification

## Protein Background

The protein encoded by this gene is a member of the SWI/SNF family of proteins, whose members display helicase and ATPase activities and which are thought to regulate transcription of certain genes by altering the chromatin structure around those genes. The encoded protein is part of the large ATP-dependent chromatin remodeling complex SNF/SWI and contains a predicted leucine zipper motif typical of many transcription factors.

## Immunogen information

### Gene ID:

83797

### Uniprot

Q96GM5

### Synonyms:

SMARCC1; BAF155; CRACC1; Rsc8; SRG3; SWI3; SWI/SNF complex subunit SMARCC1; BAF60a; SMARCD1

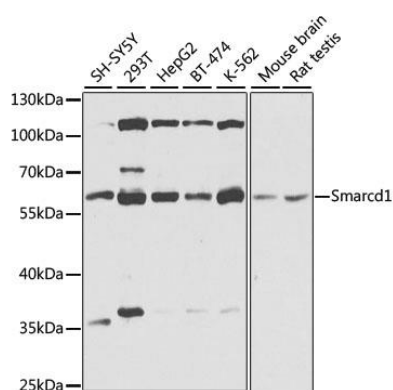
### Immunogen:

Recombinant fusion protein containing a sequence corresponding to amino acids 1-120 of mouse BAF60a (NP\_114030.2).

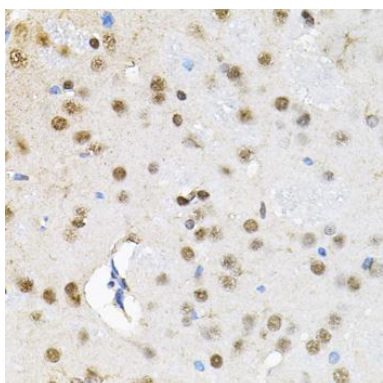
### Storage:

Store at -20°C. Avoid freeze / thaw cycles. Buffer: PBS with 0.02% sodium azide, 50% glycerol, pH7.3.

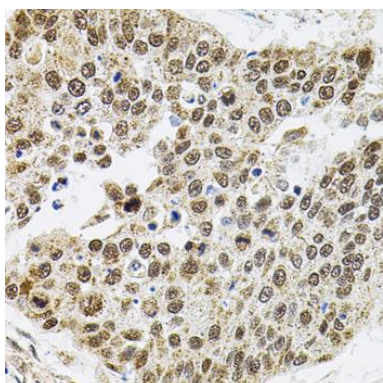
## Product Images



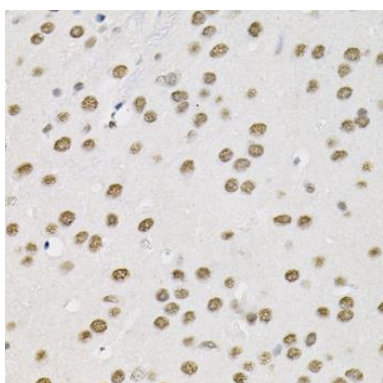
Western blot analysis of extracts of various cell lines, using Smarcd1 antibody (CAB9950) at 1:1000 dilution. Secondary antibody: HRP Goat Anti-Rabbit IgG (H+L) (CABS014) at 1:10000 dilution. Lysates/proteins: 25ug per lane. Blocking buffer: 3% nonfat dry milk in TBST. Detection: ECL Basic Kit (CABM00020). Exposure time: 15s.



Immunohistochemistry of paraffin-embedded rat brain using Smarcd1 antibody (CAB9950) (40x lens).



Immunohistochemistry of paraffin-embedded human lung cancer using Smarcd1 antibody (CAB9950) (40x lens).



Immunohistochemistry of paraffin-embedded mouse brain using Smarcd1 antibody (CAB9950) at dilution of 1:100 (40x lens).