

SOCS6 Rabbit Polyclonal Antibody



CAB9957

Product Information

Size:

20uL, 50uL, 100uL, 200uL

Observed MW:

70kDa

Calculated MW:

59kDa

Applications:

WB IHC

Reactivity:

Human, Mouse

Antibody Information

Recommended dilutions:

WB 1:500 - 1:2000 IHC 1:50
- 1:200

Source:

Rabbit

Isotype:

IgG

Purification:

Affinity purification

Protein Background

The protein encoded by this gene contains a SH2 domain and a CIS homolog domain. The protein thus belongs to the cytokine-induced STAT inhibitor (CIS), also known as suppressor of cytokine signaling (SOCS) or STAT-induced STAT inhibitor (SSI), protein family. CIS family members are known to be cytokine-inducible negative regulators of cytokine signaling. The expression of this gene can be induced by GM-CSF and EPO in hematopoietic cells. A high expression level of this gene was found in factor-independent chronic myelogenous leukemia (CML) and erythroleukemia (HEL) cell lines.

Immunogen information

Gene ID:

9306

Uniprot

O14544

Synonyms:

SOCS6; CIS-4; CIS4; HSPC060; SOCS-4; SOCS-6; SOCS4; SSI4;
STAI4; STAT14

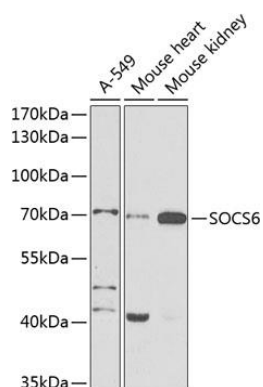
Immunogen:

Recombinant fusion protein containing a sequence corresponding to amino acids 1-210 of human SOCS6 (NP_004223.2).

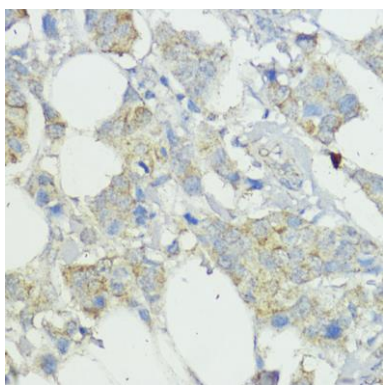
Storage:

Store at -20°C. Avoid freeze / thaw cycles. Buffer: PBS with 0.02% sodium azide, 50% glycerol, pH7.3.

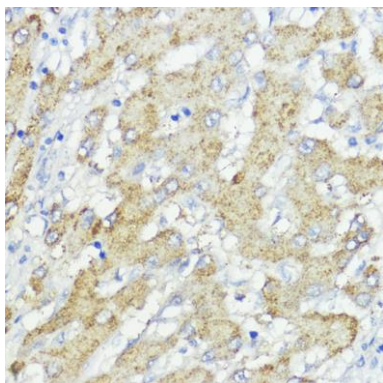
Product Images



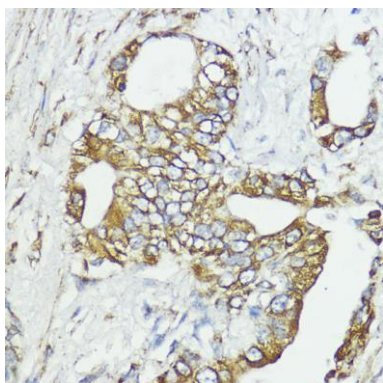
Western blot analysis of extracts of various cell lines, using SOCS6 antibody (CAB9957) at 1:1000 dilution. Secondary antibody: HRP Goat Anti-Rabbit IgG (H+L) (CABS014) at 1:10000 dilution. Lysates/proteins: 25ug per lane. Blocking buffer: 3% nonfat dry milk in TBST. Detection: ECL Basic Kit (CABM00020). Exposure time: 30s.



Immunohistochemistry of paraffin-embedded human mammary cancer using SOCS6 antibody (CAB9957) at dilution of 1:100 (40x lens).



Immunohistochemistry of paraffin-embedded human liver cancer using SOCS6 antibody (CAB9957) at dilution of 1:100 (40x lens).



Immunohistochemistry of paraffin-embedded human lung cancer using SOCS6 antibody (CAB9957) at dilution of 1:100 (40x lens).