

CEP164 Rabbit Polyclonal Antibody



CAB9964

Product Information

Size:

20uL, 50uL, 100uL, 200uL

Observed MW:

164kDa

Calculated MW:

163kDa/164kDa

Applications:

WB IHC

Reactivity:

Human, Mouse, Rat

Protein Background

This gene encodes a centrosomal protein involved in microtubule organization, DNA damage response, and chromosome segregation. The encoded protein is required for assembly of primary cilia and localizes to mature centrioles. Defects in this gene are a cause of nephronophthisis-related ciliopathies. Two transcript variants encoding different isoforms have been found for this gene.

Immunogen information

Gene ID:

22897

Uniprot

Q9UPV0

Synonyms:

CEP164; NPHP15

Antibody Information

Recommended dilutions:

WB 1:500 - 1:2000 IHC 1:50 - 1:200

Source:

Rabbit

Isotype:

IgG

Purification:

Affinity purification

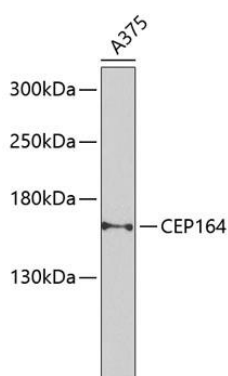
Immunogen:

Recombinant fusion protein containing a sequence corresponding to amino acids 730-829 of human CEP164 (NP_055771.4).

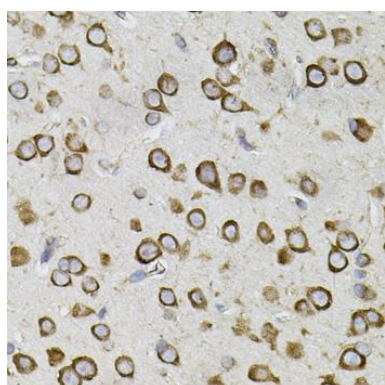
Storage:

Store at -20°C. Avoid freeze / thaw cycles. Buffer: PBS with 0.02% sodium azide, 50% glycerol, pH7.3.

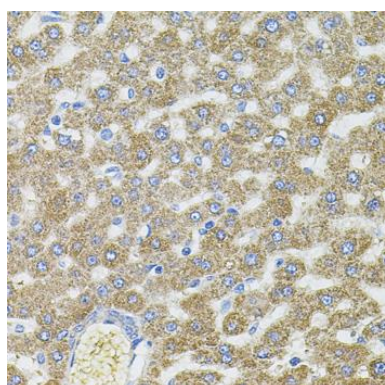
Product Images



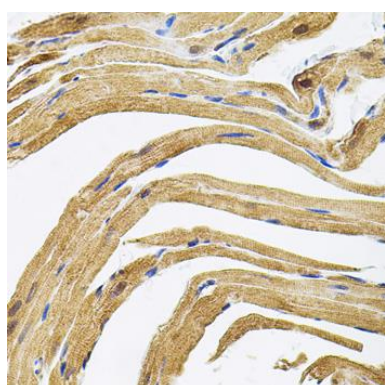
Western blot analysis of extracts of A-375 cells, using CEP164 Antibody (CAB9964) at 1:1000 dilution. Secondary antibody: HRP Goat Anti-Rabbit IgG (H+L) (CABS014) at 1:10000 dilution. Lysates/proteins: 25ug per lane. Blocking buffer: 3% nonfat dry milk in TBST. Detection: ECL Basic Kit (CABM00020). Exposure time: 90s.



Immunohistochemistry of paraffin-embedded mouse brain using CEP164 antibody (CAB9964) (40x lens).



Immunohistochemistry of paraffin-embedded rat liver using CEP164 antibody (CAB9964) (40x lens).



Immunohistochemistry of paraffin-embedded rat heart using CEP164 antibody (CAB9964) (40x lens).