

PMPCA Rabbit Polyclonal Antibody



CAB9965

Product Information

Size:

20uL, 50uL, 100uL, 200uL

Observed MW:

110kDa

Calculated MW:

44kDa/58kDa

Applications:

WB

Reactivity:

Human, Mouse, Rat

Protein Background

The protein encoded by this gene is found in the mitochondrion, where it represents the alpha subunit of a proteolytic heterodimer. This heterodimer is responsible for cleaving the transit peptide from nuclear-encoded mitochondrial proteins. Defects in this gene are a cause of spinocerebellar ataxia, autosomal recessive 2.

Immunogen information

Gene ID:

23203

Uniprot

Q10713

Synonyms:

PMPCA; Alpha-MPP; INPP5E; P-55; SCAR2

Antibody Information

Recommended dilutions:

WB 1:500 - 1:2000

Source:

Rabbit

Isotype:

IgG

Purification:

Affinity purification

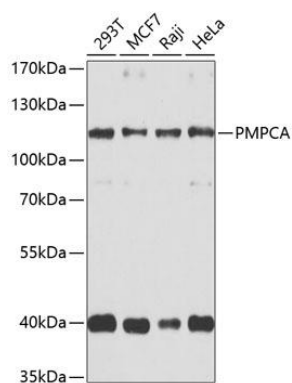
Immunogen:

Recombinant fusion protein containing a sequence corresponding to amino acids 456-525 of human PMPCA (NP_055975.1).

Storage:

Store at -20°C. Avoid freeze / thaw cycles. Buffer: PBS with 0.02% sodium azide, 50% glycerol, pH7.3.

Product Images



Western blot analysis of extracts of various cell lines, using PMPCA antibody (CAB9965) at 1:1000 dilution. Secondary antibody: HRP Goat Anti-Rabbit IgG (H+L) (CABS014) at 1:10000 dilution. Lysates/proteins: 25ug per lane. Blocking buffer: 3% nonfat dry milk in TBST. Detection: ECL Basic Kit (CABM00020). Exposure time: 30s.