

EIF3L Rabbit Polyclonal Antibody



CAB9972

Product Information

Size:

20uL, 50uL, 100uL, 200uL

Observed MW:

67kDa

Calculated MW:

61kDa/66kDa

Applications:

WB IHC

Reactivity:

Human, Mouse, Rat

Antibody Information

Recommended dilutions:

WB 1:1000 - 1:4000 IHC
1:50 - 1:200

Source:

Rabbit

Isotype:

IgG

Purification:

Affinity purification

Protein Background

Immunogen information

Gene ID:

51386

Uniprot

Q9Y262

Synonyms:

EIF3L; EIF3EIP; EIF3S11; EIF3S6IP; HSPC021; HSPC025; MSTP005

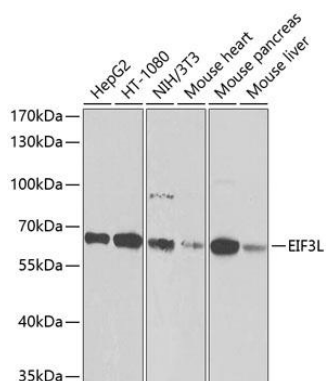
Immunogen:

Recombinant fusion protein containing a sequence corresponding to amino acids 1-230 of human EIF3L (NP_057175.1).

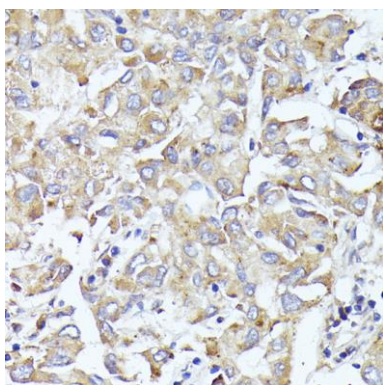
Storage:

Store at -20°C. Avoid freeze / thaw cycles. Buffer: PBS with 0.02% sodium azide, 50% glycerol, pH7.3.

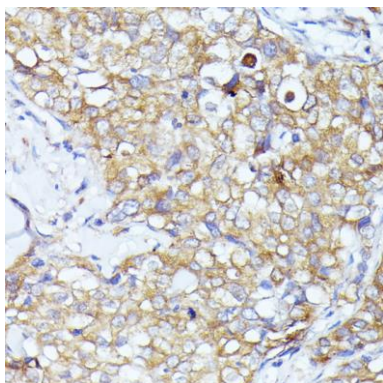
Product Images



Western blot analysis of extracts of various cell lines, using EIF3L antibody (CAB9972) at 1:1000 dilution. Secondary antibody: HRP Goat Anti-Rabbit IgG (H+L) (CABS014) at 1:10000 dilution. Lysates/proteins: 25ug per lane. Blocking buffer: 3% nonfat dry milk in TBST. Detection: ECL Basic Kit (CABM00020). Exposure time: 5s.



Immunohistochemistry of paraffin-embedded human liver cancer using EIF3L antibody (CAB9972) at dilution of 1:100 (40x lens).



Immunohistochemistry of paraffin-embedded human mammary cancer using EIF3L antibody (CAB9972) at dilution of 1:100 (40x lens).