

NSD1 Rabbit Polyclonal Antibody



CAB9981

Product Information

Size:

20uL, 50uL, 100uL, 200uL

Observed MW:

297kDa

Calculated MW:

267kDa/284kDa/296kDa

Applications:

WB

Reactivity:

Human, Mouse

Antibody Information

Recommended dilutions:

WB 1:500 - 1:1000

Source:

Rabbit

Isotype:

IgG

Purification:

Affinity purification

Protein Background

This gene encodes a protein containing a SET domain, 2 LXXLL motifs, 3 nuclear translocation signals (NLSs), 4 plant homeodomain (PHD) finger regions, and a proline-rich region. The encoded protein enhances androgen receptor (AR) transactivation, and this enhancement can be increased further in the presence of other androgen receptor associated coregulators. This protein may act as a nucleus-localized, basic transcriptional factor and also as a bifunctional transcriptional regulator. Mutations of this gene have been associated with Sotos syndrome and Weaver syndrome. One version of childhood acute myeloid leukemia is the result of a cryptic translocation with the breakpoints occurring within nuclear receptor-binding Su-var, enhancer of zeste, and trithorax domain protein 1 on chromosome 5 and nucleoporin, 98-kd on chromosome 11. Two transcript variants encoding distinct isoforms have been identified for this gene.

Immunogen information

Gene ID:

64324

Uniprot

Q96L73

Synonyms:

ARA267; KMT3B; SOTOS; SOTOS1; STO; NSD1

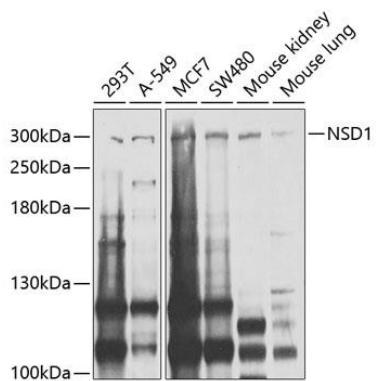
Immunogen:

Recombinant fusion protein containing a sequence corresponding to amino acids 60-260 of human NSD1 (NP_071900.2).

Storage:

Store at -20°C. Avoid freeze / thaw cycles. Buffer: PBS with 0.02% sodium azide, 50% glycerol, pH7.3.

Product Images



Western blot analysis of extracts of various cell lines, using NSD1 antibody (CAB9981) at 1:1000 dilution. Secondary antibody: HRP Goat Anti-Rabbit IgG (H+L) (CABS014) at 1:10000 dilution. Lysates/proteins: 25ug per lane. Blocking buffer: 3% nonfat dry milk in TBST. Detection: ECL Basic Kit (CABM00020). Exposure time: 60s.