

CSPP1 Rabbit Polyclonal Antibody



CAB9983

Product Information

Size:

20uL, 50uL, 100uL, 200uL

Observed MW:

145kDa

Calculated MW:

101kDa/141kDa/145kDa

Applications:

WB

Reactivity:

Human, Mouse

Antibody Information

Recommended dilutions:

WB 1:500 - 1:1000

Source:

Rabbit

Isotype:

IgG

Purification:

Affinity purification

Protein Background

This gene encodes a centrosome and spindle pole associated protein. The encoded protein plays a role in cell-cycle progression and spindle organization, regulates cytokinesis, interacts with Nephrocystin 8 and is required for cilia formation. Mutations in this gene result in primary cilia abnormalities and classical Joubert syndrome. Alternatively spliced transcript variants encoding distinct isoforms have been found for this gene.

Immunogen information

Gene ID:

79848

Uniprot

Q1MSJ5

Synonyms:

CSPP1; CSPP; JBTS21

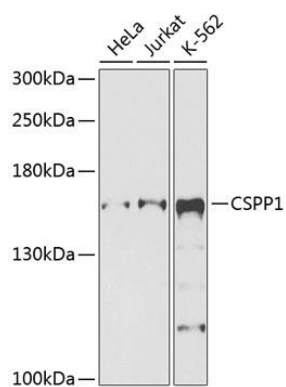
Immunogen:

Recombinant fusion protein containing a sequence corresponding to amino acids 962-1221 of human CSPP1 (NP_079066.5).

Storage:

Store at -20°C. Avoid freeze / thaw cycles. Buffer: PBS with 0.02% sodium azide, 50% glycerol, pH7.3.

Product Images



Western blot analysis of extracts of various cell lines, using CSPP1 antibody (CAB9983) at 1:1000 dilution. Secondary antibody: HRP Goat Anti-Rabbit IgG (H+L) (CABS014) at 1:10000 dilution. Lysates/proteins: 25ug per lane. Blocking buffer: 3% nonfat dry milk in TBST. Detection: ECL Basic Kit (CABM00020). Exposure time: 90s.