

# [KO Validated] SETD7 Rabbit Polyclonal Antibody



CAB9985

## Product Information

### Size:

20uL, 50uL, 100uL, 200uL

### Observed MW:

48KDa

### Calculated MW:

40kDa

### Applications:

WB IF

### Reactivity:

Human, Mouse, Rat

## Antibody Information

### Recommended dilutions:

WB 1:500 - 1:2000 IF 1:50 - 1:200

### Source:

Rabbit

### Isotype:

IgG

### Purification:

Affinity purification

## Protein Background

### Immunogen information

#### Gene ID:

80854

#### Uniprot

Q8WTS6

#### Synonyms:

SETD7; KMT7; SET7; SET7/9; SET9

#### Immunogen:

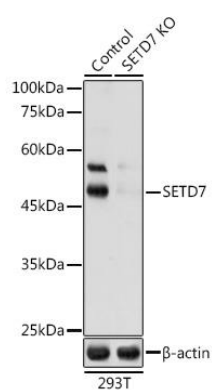
Recombinant fusion protein containing a sequence corresponding to amino acids 1-366 of human SETD7 (NP\_085151.1).

#### Storage:

Store at -20°C. Avoid freeze / thaw cycles. Buffer: PBS with 0.02% sodium azide, 50% glycerol, pH7.3.

## Product Images

---



Western blot analysis of extracts of 293T cells, using [KO Validated] SETD7 antibody (CAB9985) at 1:1000 dilution. Secondary antibody: HRP Goat Anti-Rabbit IgG (H+L) (CABS014) at 1:10000 dilution. Lysates/proteins: 25ug per lane. Blocking buffer: 3% nonfat dry milk in TBST. Detection: ECL Basic Kit (CABM00020). Exposure time: 60s.