

UQCC2 Rabbit Polyclonal Antibody



CAB9986

Product Information

Size:

20uL, 50uL, 100uL, 200uL

Observed MW:

15kDa

Calculated MW:

14kDa

Applications:

WB IHC IF

Reactivity:

Human, Mouse, Rat

Protein Background

This gene encodes a nucleoid protein localized to the mitochondria inner membrane. The encoded protein affects regulation of insulin secretion, mitochondrial ATP production, and myogenesis through modulation of mitochondrial respiratory chain activity.

Immunogen information

Gene ID:

84300

Uniprot

Q9BRT2

Synonyms:

UQCC2; C6orf125; C6orf126; Cbp6; M19; MNF1; bA6B20.2

Antibody Information

Recommended dilutions:

WB 1:500 - 1:2000 IHC 1:50
- 1:200 IF 1:50 - 1:200

Source:

Rabbit

Isotype:

IgG

Purification:

Affinity purification

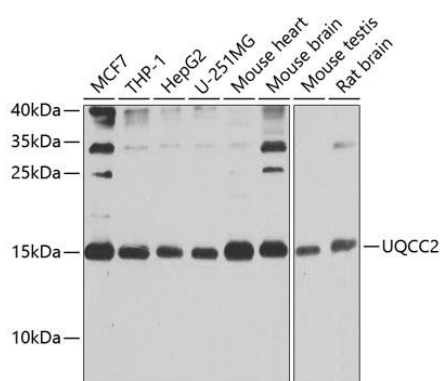
Immunogen:

Recombinant fusion protein containing a sequence corresponding to amino acids 14-126 of human UQCC2 (NP_115716.1).

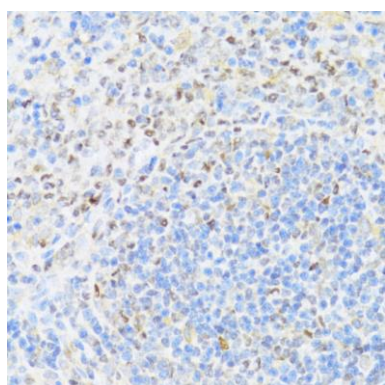
Storage:

Store at -20°C. Avoid freeze / thaw cycles. Buffer: PBS with 0.02% sodium azide, 50% glycerol, pH7.3.

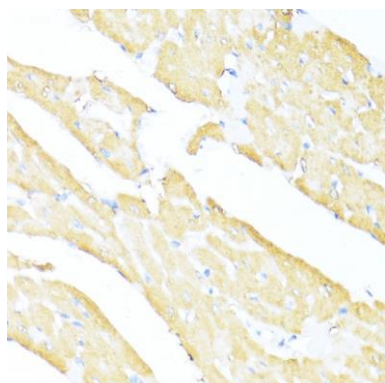
Product Images



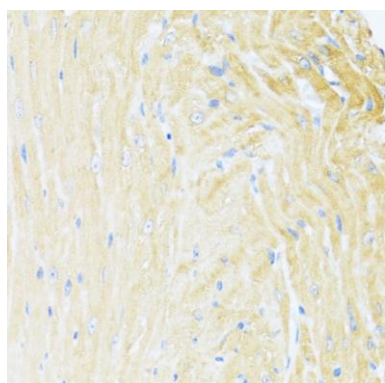
Western blot analysis of extracts of various cell lines, using UQCC2 antibody (CAB9986) at 1:1000 dilution. Secondary antibody: HRP Goat Anti-Rabbit IgG (H+L) (CABS014) at 1:10000 dilution. Lysates/proteins: 25ug per lane. Blocking buffer: 3% nonfat dry milk in TBST. Detection: ECL Basic Kit (CABM00020). Exposure time: 5s.



Immunohistochemistry of paraffin-embedded rat spleen using UQCC2 antibody (CAB9986) at dilution of 1:100 (40x lens).



Immunohistochemistry of paraffin-embedded rat heart using UQCC2 antibody (CAB9986) at dilution of 1:100 (40x lens).



Immunohistochemistry of paraffin-embedded mouse heart using UQCC2 antibody (CAB9986) at dilution of 1:100 (40x lens).