

SSH2 Rabbit Polyclonal Antibody



CAB9988

Product Information

Size:

20uL, 50uL, 100uL, 200uL

Observed MW:

158kDa

Calculated MW:

21kDa/22kDa/51kDa/158kDa

Applications:

WB

Reactivity:

Human, Mouse, Rat

Antibody Information

Recommended dilutions:

WB 1:500 - 1:2000

Source:

Rabbit

Isotype:

IgG

Purification:

Affinity purification

Protein Background

This gene encodes a protein tyrosine phosphatase that plays a key role in the regulation of actin filaments. The encoded protein dephosphorylates and activates cofilin, which promotes actin filament depolymerization. Alternative splicing results in multiple transcript variants.

Immunogen information

Gene ID:

85464

Uniprot

Q76176

Synonyms:

SSH2; SSH-2; SSH-2L

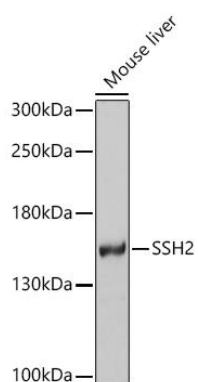
Immunogen:

Recombinant fusion protein containing a sequence corresponding to amino acids 53-202 of human SSH2 (NP_001269060.1).

Storage:

Store at -20°C. Avoid freeze / thaw cycles. Buffer: PBS with 0.02% sodium azide, 50% glycerol, pH7.3.

Product Images



Western blot analysis of extracts of Mouse liver, using SSH2 antibody (CAB9988) at 1:1000 dilution. Secondary antibody: HRP Goat Anti-Rabbit IgG (H+L) (CABS014) at 1:10000 dilution. Lysates/proteins: 25ug per lane. Blocking buffer: 3% nonfat dry milk in TBST. Detection: ECL Basic Kit (CABM00020). Exposure time: 5min.