

# SLC2A13 Rabbit Polyclonal Antibody



CAB9993

---

## Product Information

### Size:

20uL, 50uL, 100uL, 200uL

### Observed MW:

73kDa

### Calculated MW:

70kDa

### Applications:

WB IHC

### Reactivity:

Human, Mouse, Rat

## Antibody Information

### Recommended dilutions:

WB 1:1000 - 1:4000 IHC  
1:50 - 1:200

### Source:

Rabbit

### Isotype:

IgG

### Purification:

Affinity purification

## Protein Background

### Immunogen information

#### Gene ID:

114134

#### Uniprot

Q96QE2

#### Synonyms:

SLC2A13; HMIT

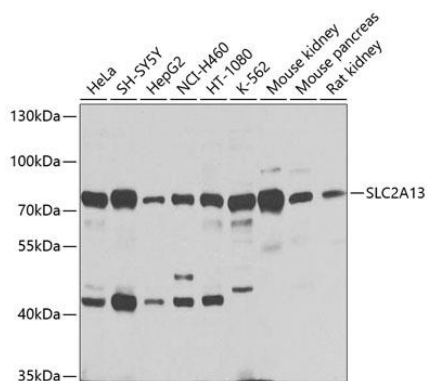
#### Immunogen:

Recombinant fusion protein containing a sequence corresponding to amino acids 564-648 of human SLC2A13 (NP\_443117.3).

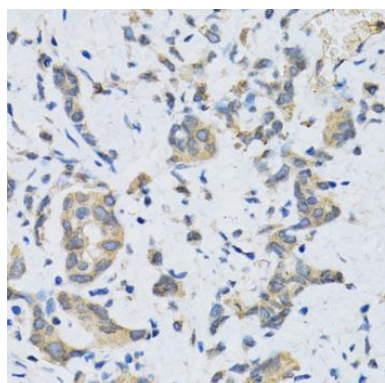
#### Storage:

Store at -20°C. Avoid freeze / thaw cycles. Buffer: PBS with 0.02% sodium azide, 50% glycerol, pH7.3.

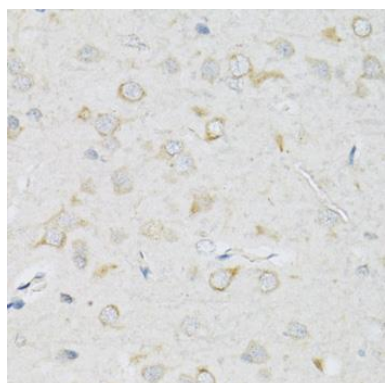
## Product Images



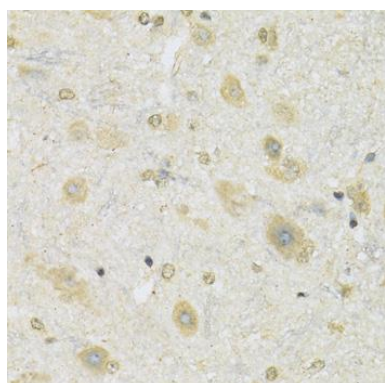
Western blot analysis of extracts of various cell lines, using SLC2A13 antibody (CAB9993) at 1:1000 dilution. Secondary antibody: HRP Goat Anti-Rabbit IgG (H+L) (CABS014) at 1:10000 dilution. Lysates/proteins: 25ug per lane. Blocking buffer: 3% nonfat dry milk in TBST. Detection: ECL Basic Kit (CABM00020). Exposure time: 1s.



Immunohistochemistry of paraffin-embedded human gastric cancer using SLC2A13 antibody (CAB9993) at dilution of 1:100 (40x lens).



Immunohistochemistry of paraffin-embedded rat brain using SLC2A13 antibody (CAB9993) at dilution of 1:100 (40x lens).



Immunohistochemistry of paraffin-embedded mouse spinal cord using SLC2A13 antibody (CAB9993) at dilution of 1:100 (40x lens).