

# GAPDH Rabbit Polyclonal Antibody



CABC001

## Product Information

### Size:

100 uL

### Observed MW:

36kDa

### Calculated MW:

31kDa/36kDa

### Applications:

WB IHC IF IP

### Reactivity:

Human, Mouse, Rat

## Antibody Information

### Recommended dilutions:

WB 1:1000 - 1:10000 IHC

1:50 - 1:100 IF 1:20 - 1:50

IP 1:20 - 1:50

### Source:

Rabbit

### Isotype:

IgG

### Purification:

Affinity purification

## Protein Background

This gene encodes a member of the glyceraldehyde-3-phosphate dehydrogenase protein family. The encoded protein has been identified as a moonlighting protein based on its ability to perform mechanistically distinct functions. The product of this gene catalyzes an important energy-yielding step in carbohydrate metabolism, the reversible oxidative phosphorylation of glyceraldehyde-3-phosphate in the presence of inorganic phosphate and nicotinamide adenine dinucleotide (NAD). The encoded protein has additionally been identified to have uracil DNA glycosylase activity in the nucleus. Also, this protein contains a peptide that has antimicrobial activity against *E. coli*, *P. aeruginosa*, and *C. albicans*. Studies of a similar protein in mouse have assigned a variety of additional functions including nitrosylation of nuclear proteins, the regulation of mRNA stability, and acting as a transferrin receptor on the cell surface of macrophage. Many pseudogenes similar to this locus are present in the human genome. Alternative splicing results in multiple transcript variants.

## Immunogen information

### Gene ID:

2597

### Uniprot

P04406

### Synonyms:

G3PD; GAPD; HEL-S-162eP; GAPDH

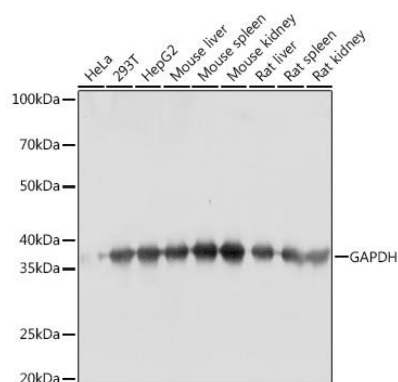
### Immunogen:

Recombinant fusion protein containing a sequence corresponding to amino acids 1-335 of human GAPDH (NP\_002037.2).

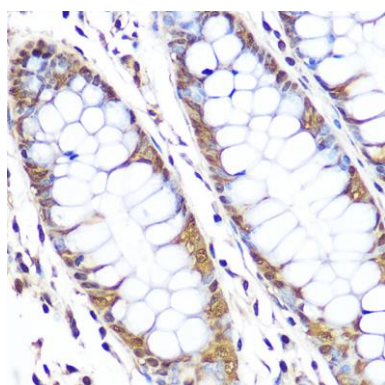
### Storage:

Store at -20°C. Avoid freeze / thaw cycles. Buffer: PBS with 0.02% sodium azide, 50% glycerol, pH7.3.

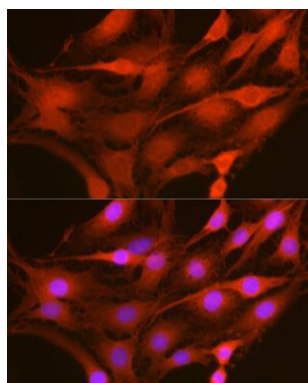
## Product Images



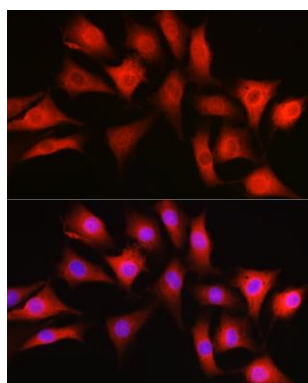
Western blot analysis of extracts of various cell lines, using GAPDH antibody (CABC001) at 1:10000 dilution. Secondary antibody: HRP Goat Anti-Rabbit IgG (H+L) (CABS014) at 1:10000 dilution. Lysates/proteins: 25ug per lane. Blocking buffer: 3% nonfat dry milk in TBST. Detection: ECL Basic Kit (CABM00020). Exposure time: 3s.



Immunohistochemistry of paraffin-embedded human colon using GAPDH Rabbit pAb (CABC001) at dilution of 1:100 (40x lens).



Immunofluorescence analysis of C6 cells using GAPDH Rabbit pAb (CABC001) at dilution of 1:100 (40x lens). Blue: DAPI for nuclear staining.



Immunofluorescence analysis of NIH-3T3 cells using GAPDH Rabbit pAb (CABC001) at dilution of 1:100 (40x lens). Blue: DAPI for nuclear staining.