

# Alpha-Tubulin Rabbit Polyclonal Antibody



CABC007

## Product Information

**Size:**

100 uL

**Observed MW:**

50kDa

**Calculated MW:**

48kDa/49kDa

**Applications:**

WB IF

**Reactivity:**

Human, Mouse, Rat

## Antibody Information

**Recommended dilutions:**

WB 1:2000 - 1:10000 IF

1:50 - 1:200

**Source:**

Rabbit

**Isotype:**

IgG

**Purification:**

Affinity purification

## Protein Background

Microtubules of the eukaryotic cytoskeleton perform essential and diverse functions and are composed of a heterodimer of alpha and beta tubulin. The genes encoding these microtubule constituents are part of the tubulin superfamily, which is composed of six distinct families. Genes from the alpha, beta and gamma tubulin families are found in all eukaryotes. The alpha and beta tubulins represent the major components of microtubules, while gamma tubulin plays a critical role in the nucleation of microtubule assembly. There are multiple alpha and beta tubulin genes and they are highly conserved among and between species. This gene encodes an alpha tubulin that is a highly conserved homolog of a rat testis-specific alpha tubulin. Alternatively spliced transcript variants encoding different isoforms have been found for this gene.

## Immunogen information

**Gene ID:**

7277

**Uniprot**

P68366

**Synonyms:**

TUBA4A; ALS22; H2-ALPHA; TUBA1

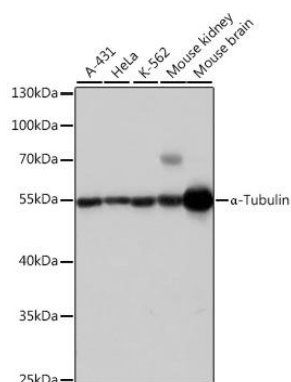
**Immunogen:**

Recombinant fusion protein containing a sequence corresponding to amino acids 1-180 of human Alpha-Tubulin (NP\_005991.1).

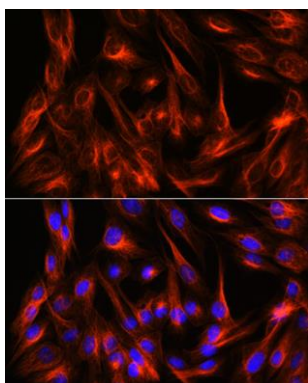
**Storage:**

Store at -20°C. Avoid freeze / thaw cycles. Buffer: PBS with 0.02% sodium azide, 50% glycerol, pH7.3.

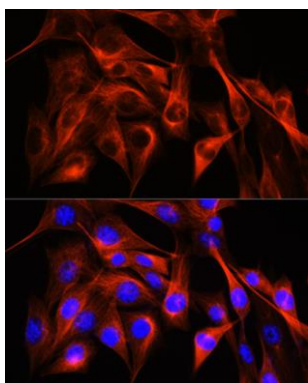
## Product Images



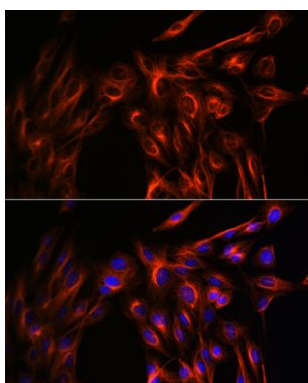
Western blot analysis of extracts of various cell lines, using  $\alpha$ -Tubulin antibody (CABC007) at 1:1000 dilution. Secondary antibody: HRP Goat Anti-Rabbit IgG (H+L) (CABS014) at 1:10000 dilution. Lysates/proteins: 25ug per lane. Blocking buffer: 3% nonfat dry milk in TBST. Detection: ECL Basic Kit (CABM00020). Exposure time: 1s.



Immunofluorescence analysis of C6 cells using  $\alpha$ -Tubulin Rabbit pAb (CABC007) at dilution of 1:100 (40x lens). Blue: DAPI for nuclear staining.



Immunofluorescence analysis of NIH-3T3 cells using  $\alpha$ -Tubulin Rabbit pAb (CABC007) at dilution of 1:100 (40x lens). Blue: DAPI for nuclear staining.



Immunofluorescence analysis of U-2 OS cells using  $\alpha$ -Tubulin Rabbit pAb (CABC007) at dilution of 1:100 (40x lens). Blue: DAPI for nuclear staining.