

Beta-Tubulin Mouse Monoclonal Antibody



CABC010

Product Information

Size:

100 uL

Observed MW:

50kDa

Calculated MW:

50kDa

Applications:

WB IHC

Reactivity:

Human, Mouse, Rat

Protein Background

This gene encodes a beta tubulin protein. This protein forms a dimer with alpha tubulin and acts as a structural component of microtubules. Mutations in this gene cause cortical dysplasia, complex, with other brain malformations 6. Alternative splicing results in multiple splice variants. There are multiple pseudogenes for this gene on chromosomes 1, 6, 7, 8, 9, and 13.

Immunogen information

Gene ID:

203068

Uniprot

P07437

Synonyms:

CDCBM6; CSCSC1; M40; OK/SW-cl.56; TUBB1; TUBB5; Beta Tubulin; TUBB; Beta-Tubulin

Antibody Information

Recommended dilutions:

WB 1:2000 - 1:5000 IHC

1:200 - 1:500

Source:

Mouse

Isotype:

IgG

Purification:

Affinity purification

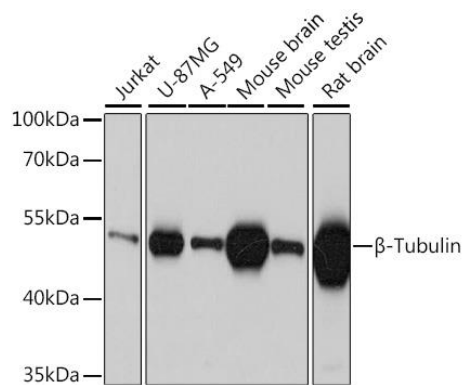
Immunogen:

Recombinant protein of human TUBB

Storage:

Store at -20°C. Avoid freeze / thaw cycles. Buffer: PBS with 0.02% sodium azide, 50% glycerol, pH7.3.

Product Images



Western blot analysis of extracts of various cell lines, using beta-Tubulin antibody (CABC010) at 1:5000 dilution. Secondary antibody: HRP Goat Anti-Mouse IgG (H+L) (CABS003) at 1:10000 dilution. Lysates/proteins: 25ug per lane. Blocking buffer: 3% nonfat dry milk in TBST. Detection: ECL Basic Kit (CABM00020). Exposure time: 1s.